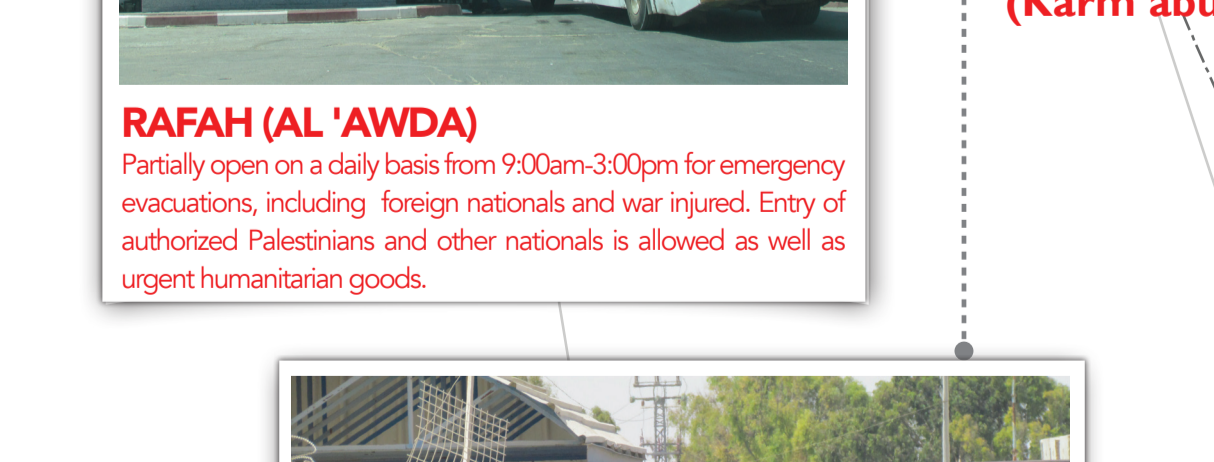
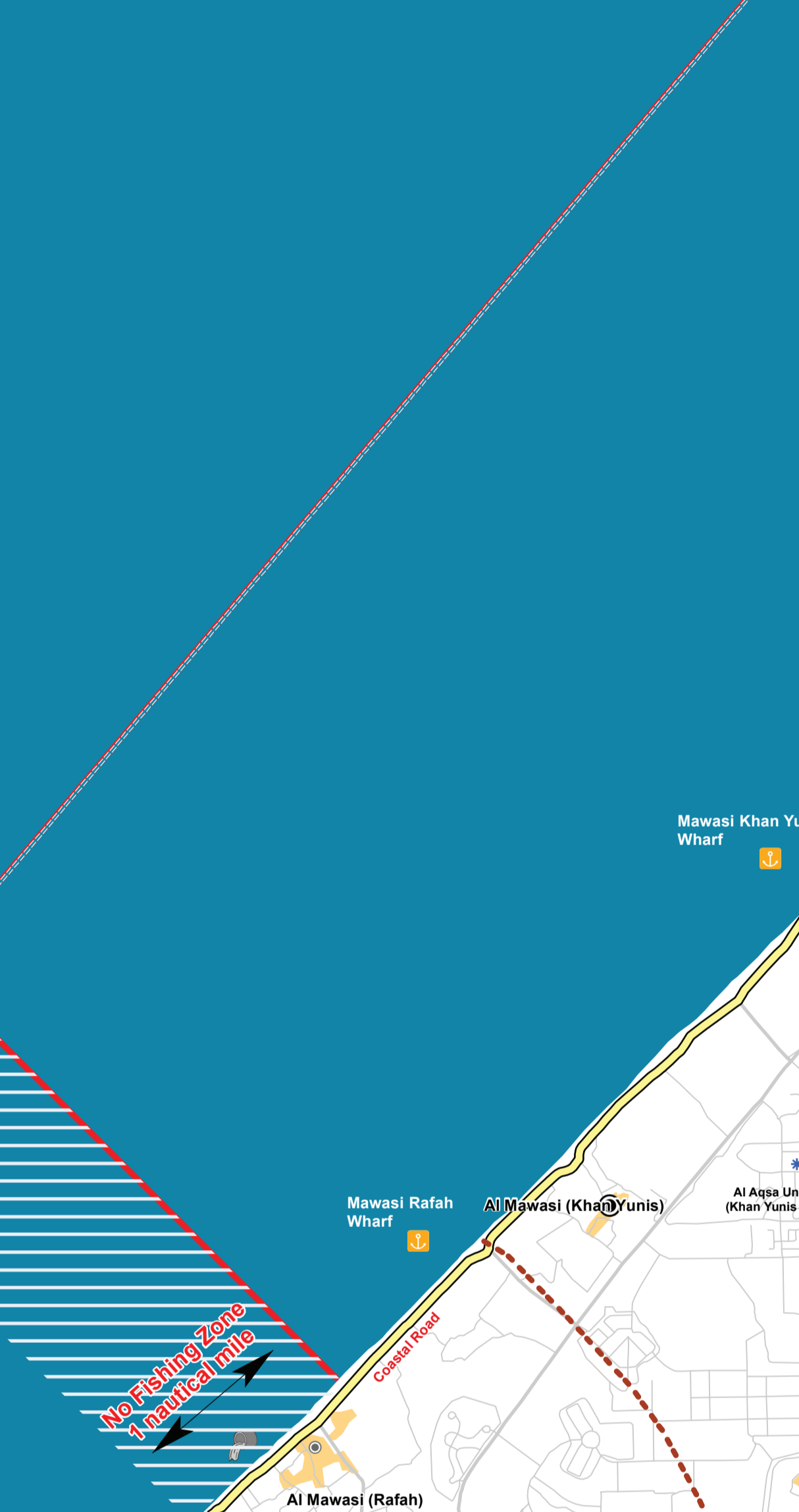
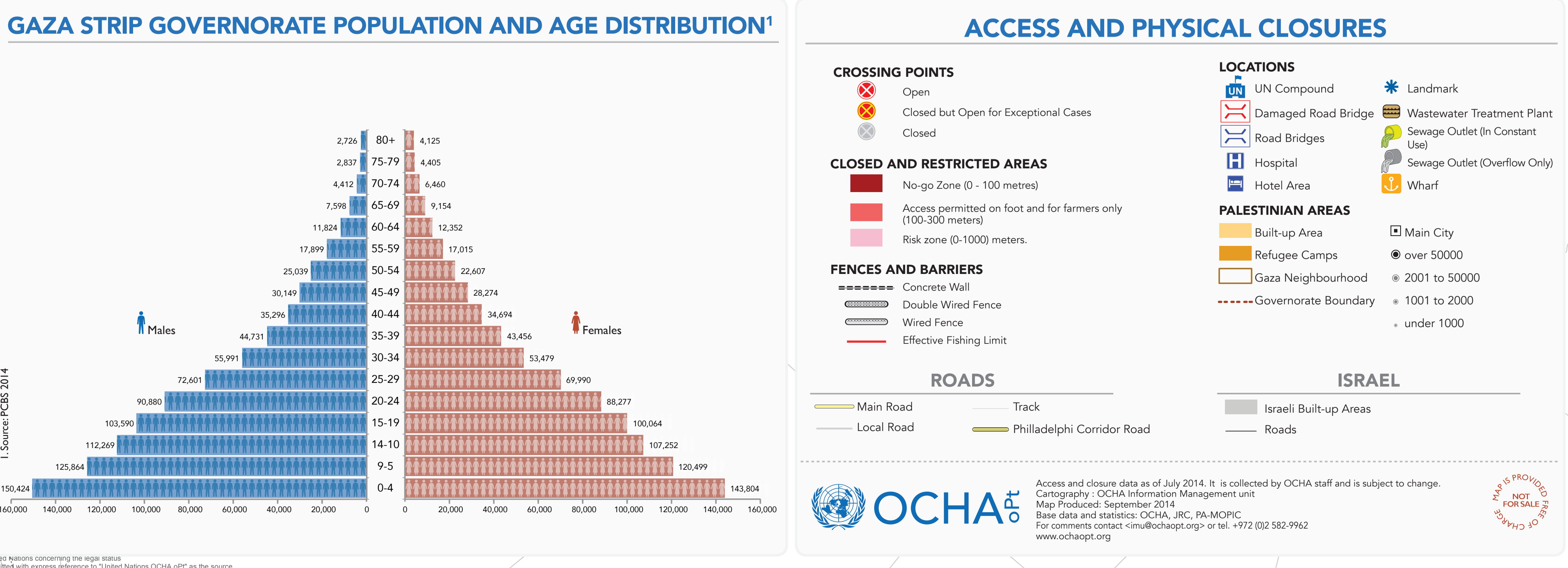
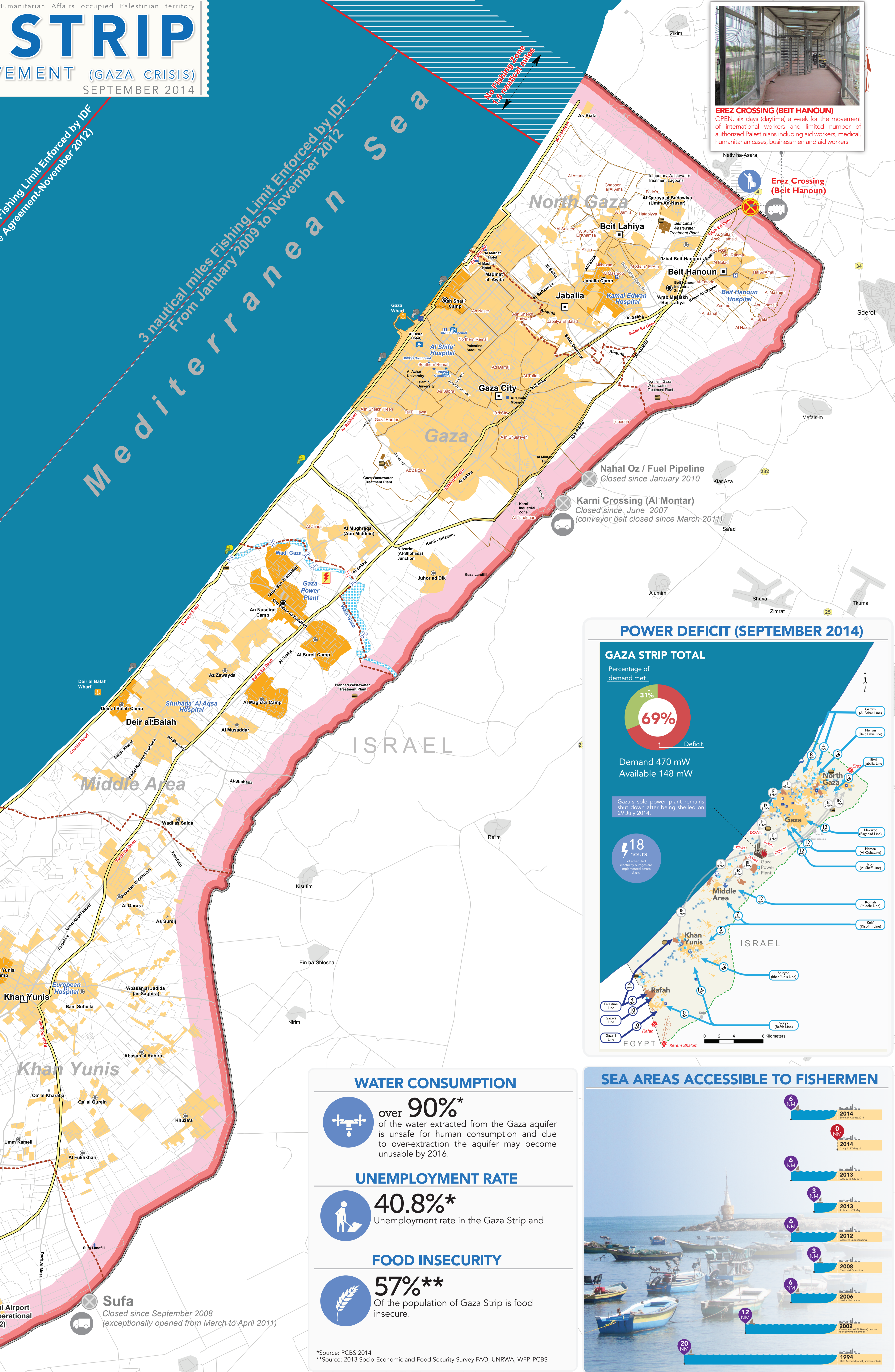


**EREZ CROSSING (BEIT HANOUN)**  
OPEN, six days (daytime) a week for the movement of international workers and limited number of authorized Palestinians including aid workers, medical, humanitarian cases, businessmen and aid workers.



\*Source: PCBS 2014  
\*\*Source: 2013 Socio-Economic and Food Security Survey FAO, UNRWA, WFP, PCBS



<sup>1</sup>Source: PCBS 2014