

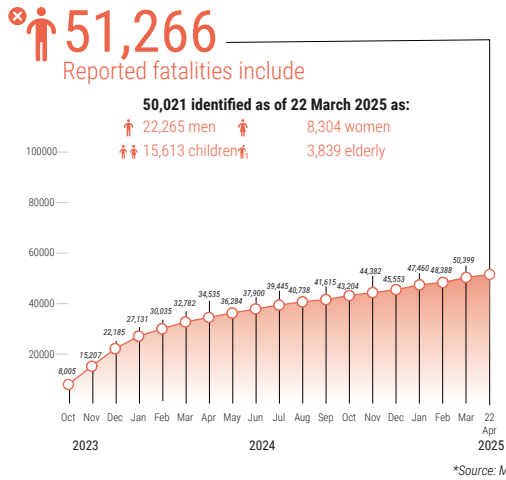
# REPORTED IMPACT SNAPSHOT | GAZA STRIP

22 April 2025 at 15:00

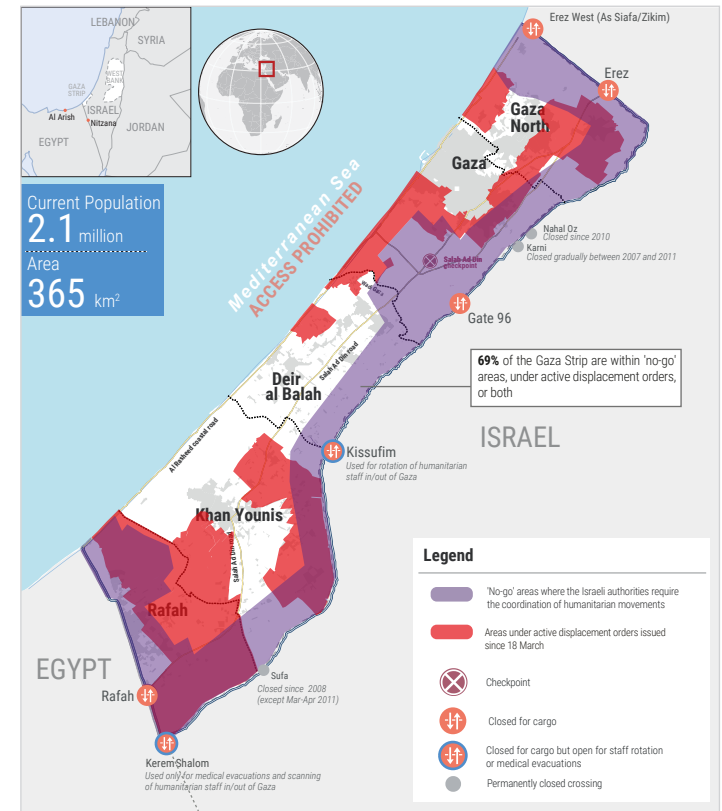
**Disclaimer:** Figures that are yet-to-be verified by the UN are attributed to their source. Casualty numbers have been provided by the Ministry of Health (MoH) and the Israeli authorities. The fatality breakdowns currently cited are those that the MoH in Gaza has fully identified as of 22 March 2025 out of the higher number of casualties they report. The latest casualty updates are also available on the Health Cluster's [Unified Dashboard](#).

## REPORTED CASUALTIES (Cumulative) as of 22 April 2025

### Palestinians\*



### Israelis\*\*



## FOOD SECURITY

- 91% of the analyzed population (1.95 million) has been projected\* to face high levels of acute food insecurity classified in IPC Phase 3 (Crisis) or above, including:
    - 876K people facing emergency levels of food insecurity (IPC Phase 4).
    - 345K people facing catastrophic levels of food insecurity (IPC Phase 5).
  - 82% of croplands, 55% of on-farm irrigation systems and 78% of greenhouses damaged (source: IRDNA, issued in February 2025).
  - 72% of the fishing fleet destroyed (source: Food Security Sector, as of December 2024).
  - 95% (~15,000) of Gaza's cattle have died, with nearly all calves slaughtered, 43% (~25,000) sheep, 37% (~3,000) goats, and 1% (34,000) birds remain alive (source: FAO assessment, as of December 2024).
  - ~68% of agricultural wells damaged (source: FAO, as of 31 December 2024).
- \*Source: IPC Projection, November 2024 - April 2025 (assessed as of October 2024)

## WATER AND SANITATION\*

- 91% of households have experienced water insecurity between 24 February and 10 March 2025.
  - 89% of the WASH sector assets have been either destroyed or partially damaged (source: IRDNA, issued in February 2025).
  - 78% of the population is at risk of sanitation-related threats from rodents and pests, 42% from solid waste, 26% from sewage, and 46% from excreta or sewage release.
  - 65% of people in Gaza receive less than 6 liters per person per day for drinking and cooking (minimum emergency standard for OPT).
  - 35% of people in Gaza receive less than 15 liters per person per day for drinking, cooking, and basic hygiene (minimum emergency standard for OPT).
- \*Source: WASH Cluster, as of January 2025, unless otherwise noted

## SHELTER\*

- 436,000 of housing units (92%) are destroyed (160,000) or damaged (276,000).
  - 1,875,000 people are in need of emergency shelter and essential household items.
- \*Source: Shelter Cluster, estimates before the ceasefire

## PROTECTION

- >1 million children in need of mental health and psycho-social support (source: UNICEF).
- 62% of people don't have access to legal documents proving property ownership (source: IRDNA, issued in February 2025).
- At least 418 aid workers killed (410 nationals, 8 foreigners), some in the line of duty, including:
  - 295 UN staff - UNRWA: 290; WHO: 1; UNDP: 1; UNOPS: 2; UNDSS: 1.
  - 44 PRCS staff and volunteers, including 27 while on duty.
  - At least 79 other aid workers.
- >1,400 health workers killed, including some also counted under aid workers above (source: MoH, as of 15 Apr 2025).
- 110 Civil Defence staff killed while on duty (source: PCD).
- 210 journalists and media workers killed (source: PJS).

## EDUCATION\*

- >658,000 school-aged children and 87,000 tertiary students are left without access to formal learning spaces (source: IRDNA, issued in February 2025).
  - 13,519 school students and 651 educational staff killed and >21,713 students and 2,803 teachers injured (source: MoE, as of 22 April 2025).
  - Nearly 88.5% of schools (499 out of 564) will require full reconstruction or major rehabilitation (as of 25 February 2025).
  - 57 university buildings destroyed (source: MoE).
  - >2,308 educational facilities, ranging from kindergartens to universities, have been destroyed (source: IRDNA, issued in February 2025).
- \*Source: Education Cluster, unless otherwise noted

## HEALTH\*

- 66% (23 out of 35\*\*) of hospitals partially functional (4 in North Gaza, 12 in Gaza city, 3 in Deir al Balah, 4 in Khan Younis).
  - 8 field hospitals functional, including 4 fully and 4 partially (1 in Gaza, 2 in Deir al Balah, 3 in Khan Younis, and 2 in Rafah).
  - 47% (73 out of 154) of primary health care centres functional including nine fully and 64 partially.
  - 30% (8 out of 27) of UNRWA health centres functional (source: UNRWA, as of 6 April).
  - 21 EMTs, including 2 in North Gaza, 2 in Gaza, 8 in Deir al Balah, 8 in Khan Younis, 1 in Rafah.
  - Between 10,500 and 12,500 patients require medical evacuation abroad. Between 1 February and 9 April 2025, 1,823 patients, including 689 children, and 2,742 companions have been evacuated outside Gaza.
- \*Source: Health Cluster as of 13 April 2025, unless otherwise noted  
 \*\* Two hospitals in Gaza city were merged into one facility

## NUTRITION\*

- >92% of children aged 6-23 months and pregnant and breastfeeding women are not meeting their nutrient requirements due to lack of minimum dietary diversity.
  - 290,000 children under five and 150,000 pregnant and breastfeeding women require feeding and micronutrient supplements.
  - >16,000 pregnant and breastfeeding women are estimated to require treatment for acute malnutrition in 2025 (source: Nutrition cluster, 2025 OPT Flash Appeal).
  - >60,000 children are estimated to require treatment for acute malnutrition in 2025 (source: Nutrition cluster, 2025 OPT Flash Appeal).
- \*Source: Nutrition Cluster unless otherwise noted

## REPORTED DAMAGE

- 69% of all structures are destroyed or damaged (source: UNOSAT, as of 1 December 2024).
- 88% of the 48,987 assessed entities in the commerce and industry sector in Gaza have been damaged or destroyed, including 22% damaged and 66% destroyed (source: IRDNA, issued in February 2025).
- 81% of the classified road network (primary, secondary, and tertiary roads) and 62% of the total road network (including agricultural roads) have been damaged or destroyed (source: IRDNA, issued in February 2025).