

DAY 445

Disclaimer: Figures that are yet-to-be verified by the UN are attributed to their source. Casualty numbers have been provided by the Ministry of Health (MoH) and the Israeli authorities. The fatality breakdowns currently cited are those that the MoH in Gaza has fully identified as of 7 October 2024 out of the higher number of casualties they report. The latest casualty updates are also available on the Health Cluster's [Unified Dashboard](#).

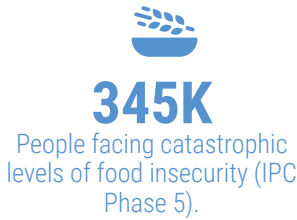
KEY FIGURES



Source: MoH Gaza



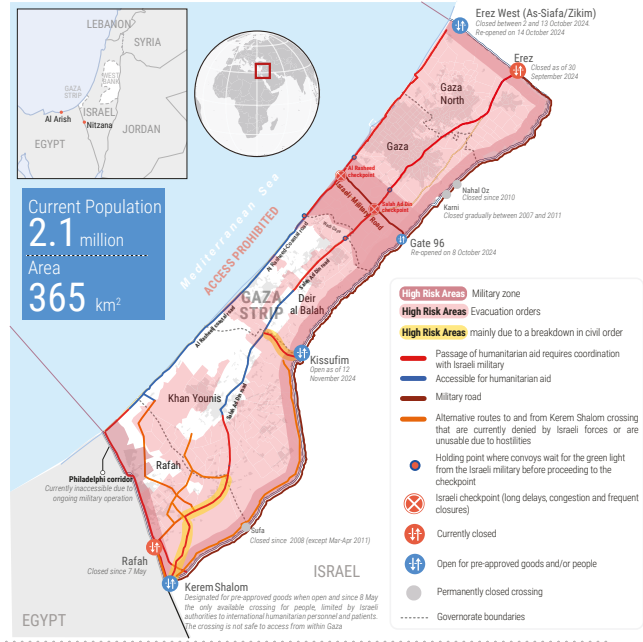
Source: UN Estimate



Source: IPC Projection, November 2024 - April 2025

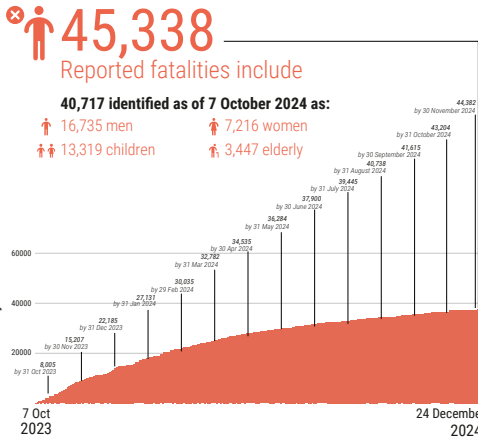


Source: UN Estimate



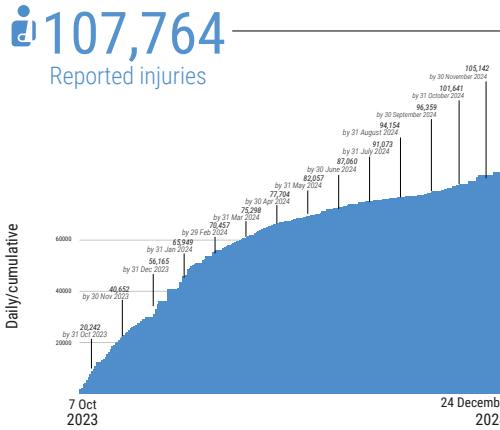
REPORTED CASUALTIES (Cumulative) as of 24 December 2024

Palestinians*



Separately, more than 10,000 people reported missing or under the rubble (source: GMD and PCD).

*Source: MoH Gaza



*Source: MoH Gaza

Israelis**



** According to Israeli media citing official sources.
*** This includes fatalities on 7 October and the immediate aftermath, including foreign nationals.
**** The reported Israeli casualties are soldiers killed or injured since the start of the ground operation (source: Israeli military website).

FOOD SECURITY

- Famine thresholds may have already been crossed, or else will be in the near future in northern Gaza (Source: IPC Famine Review Committee alert, 8 November).
- 91% of the analyzed population (1.95 million) is projected* to face high levels of acute food insecurity classified in IPC Phase 3 (Crisis) or above, including:
 - 876K people facing emergency levels of food insecurity (IPC Phase 4).
 - 345K people facing catastrophic levels of food insecurity (IPC Phase 5).
- 68% of cropland, 52% of agricultural wells, and 44% of greenhouse area damaged (source: UNOSAT, Aug 2024; FAO, 1 Sep 2024).
- 70% of the fishing fleet destroyed (Food Security Sector, August 2024).
- 15,000 (95%) of Gaza's cattle have died, with nearly all calves slaughtered, ~25,000 sheep (43%), ~3,000 goats (37%), and 34,000 birds (1%) remain alive, (source: FAO assessment, March-August 2024).

* Source: IPC Projection, November 2024 - April 2025

PROTECTION

- >1 million children in need of mental health and psycho-social support (source: UNICEF).
- At least 363 aid workers killed (356 nationals, 7 foreigners), some in the line of duty, including:
 - 262 UN staff - UNRWA: 258; WHO: 1; UNDP: 1; UNOPS: 1; UNSS: 1.
 - 34 PRCs staff and volunteers, including 19 while on duty.
 - At least 67 other aid workers.
- 1,057 health workers killed, including some also counted under aid workers above (source: MoH Gaza).
- 94 Civil Defence staff killed while on duty (source: PCD).
- 188 journalists and media workers killed (source: PJS).
- 190 UNRWA installations damaged (source: UNRWA).

SHELTER*

- 92% (436,000) of housing units are destroyed (160,000) or severely/partially damaged (276,000).
- 1.5 m² average space per person in IDP shelters, below the minimum emergency indicator of 3.5 m² per person.
- 1,875,000 people in need of emergency shelter and essential household items.
- >450,000 people in flood-prone areas. (source: UN estimate).
- 945,000 people in need of winterization support.

*Source: Shelter Cluster, unless otherwise noted

HEALTH*

- 47% (17 out of 36) of hospitals partially functional (2 in North Gaza, 8 in Gaza city, 3 in Deir al Balah, 4 in Khan Younis).
- 11 field hospitals functional, including 6 fully and 5 partially (4 in Deir al Balah, 5 in Khan Younis, and 2 in Rafah).
- 37% (51 out of 137) of primary health care centres functional, including 5 fully and 46 partially.
- 26% (7 out of 27) of UNRWA health centres functional (source: UNRWA, as of 17 December).
- 18 EMTs, including 17 in southern Gaza, one in Gaza governorate, and none in North Gaza.
- 130 ambulances damaged (source: MoH Gaza).
- 39% (6,075 out of 15,600) of critical patients who submitted requests for medical evacuation have had their requests approved; these include 33% (5,138 out of 15,600) who were medically evacuated abroad as of 26 August.
- 14,000 patients need medical evacuation abroad (24 Dec 2024). In total, since the closure of Rafah Crossing on 7 May, 378 patients including 217 children have been exceptionally evacuated outside Gaza.

*Source: Health Cluster, unless otherwise noted

REPORTED DAMAGE

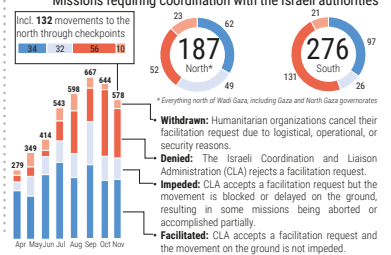
- 69% of all structures are destroyed or damaged (source: UNOSAT, as of 1 December 2024).
- >80% of commercial facilities (source: World Bank, as of Jan 24).
- 68% of the total road network (source: UNOSAT, as of Aug 24).

EDUCATION*

- ~658,000 students with no access to formal education.
- 11,913 students and 481 educational staff killed and >19,055 students and 2,569 teachers injured (source: MoE, as of 24 December).
- At least 88% of school buildings (496 out of 564) require either full reconstruction or major rehabilitation (as of 1 December 2024).
- 35 university buildings were destroyed and 57 were damaged (source: MoE, as of 7 October 2024).

*Source: Education Cluster, unless otherwise noted

HUMANITARIAN ACCESS (1-23 Dec)



NUTRITION*

- Over 96% of children aged 6-23 months and women are not meeting their nutrient requirements due to lack of minimum diet diversity.
- 290,000 children under five and 150,000 pregnant and breastfeeding women require feeding and micronutrient supplements.
- >60,000 children are estimated to require treatment for acute malnutrition in 2025.

*Source: Nutrition Cluster

WATER AND SANITATION*

- 94,207 m³ of water produced and supplied on average per day between 8 and 20 December, less than a quarter of water supply prior to October 2023. This includes a daily average of 39,699 m³ of water produced by municipal water wells.
- 1 million people are at risk of sanitation-related threats, including rodents and pests (76%), solid waste (54%), sewage (46%), and human waste (34%).
- 62% (1.4 million) of people receive less than the recommended 6 litres per person per day for drinking and cooking.
- 47% of people receive less than the minimum recommended 1.5 litres per person per day for drinking, cooking, and basic hygiene.

*Source: WASH Cluster

INCOMING TRUCKLOADS*

The pre-crisis average per working day in 2023 was 500 truckloads, including fuel.

*Commercial trucks are not captured in the totals following 7 May, as the UN has been unable to directly observe the arrival of private sector cargo at Kerem Shalom crossing. Fuel is not included.

