

DAY 250

Disclaimer: Figures that are yet-to-be verified by the UN are attributed to their source. Casualty numbers have been provided by the Ministry of Health (MoH) or the Government Media Office (GMO) in Gaza and the Israeli authorities. Previous data breakdowns provided in this snapshot of women and children killed were attributed to the GMO based on reported fatalities. The fatality breakdowns currently cited are those that the MoH in Gaza has recently fully identified out of the higher number of casualties they report.

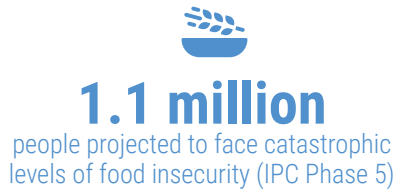
KEY FIGURES



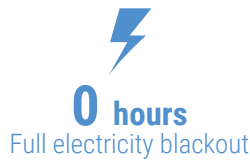
Source: MoH Gaza



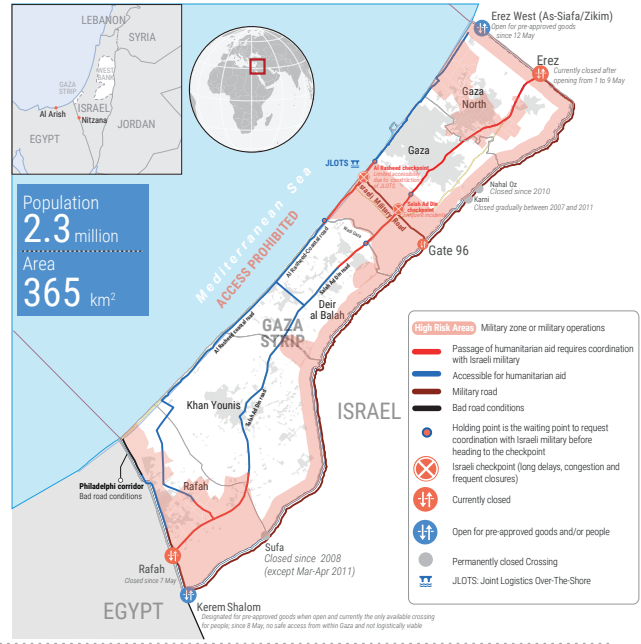
Source: UNRWA



Source: IPC projection for 16 March - 15 July 2024

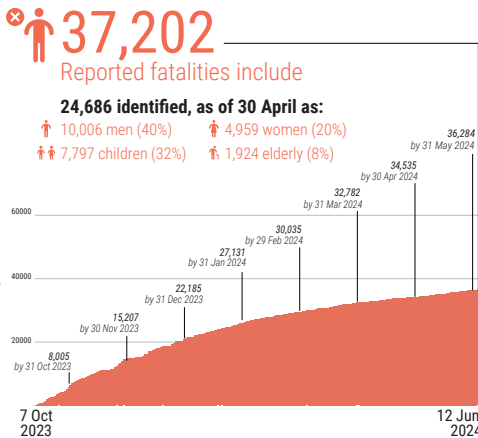


Source: GEDCO



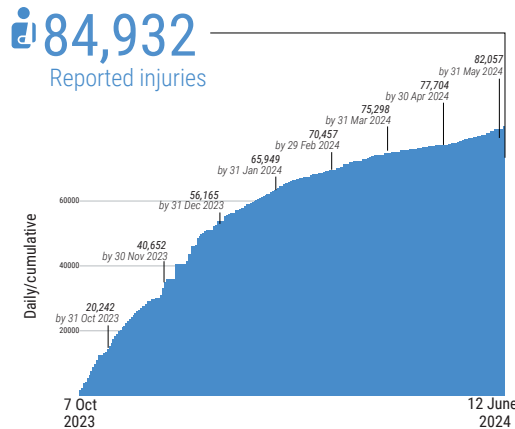
REPORTED CASUALTIES (Cumulative) as of 12 June 2024

Palestinians*



Separately, more than **10,000** reported missing or under the rubble (source: GMO and PCD).

*Source: MoH Gaza



*Source: MoH Gaza

Israelis**



** According to Israeli media citing official sources
 *** This includes fatalities on 7 October and the immediate aftermath, including foreign nationals.
 **** The reported Israeli casualties are soldiers killed or injured since the start of the ground operation.

FOOD SECURITY

- **265K** people facing crisis levels of food insecurity (IPC Phase 3).
- **854K** people facing emergency levels of food insecurity (IPC Phase 4).
- **1.1 million** people facing catastrophic levels of food insecurity (IPC Phase 5).
- **60-70%** of meat and dairy-producing livestock killed or prematurely slaughtered (source: FAO).

* Source: IPC projection for 16 March - 15 July 2024

PROTECTION

- **~1.7 million** internally displaced persons, (source: UNRWA).
- **>1 million** children in need of mental health and psycho-social support, (source: UNICEF).
- **~17,000** children are unaccompanied or separated, (source: UNICEF).
- At least **273** aid workers killed (266 nationals, 7 foreigners), including:
 - **197** UN staff - UNRWA: 193; WHO: 1; UNDP: 1; UNOPS: 1; UNDSS: 1.
 - **33** PRCS staff and volunteers, including 19 while on duty.
 - At least **43** other aid workers.
- **498** health workers killed, including at least 15 also counted under aid workers above (source: MoH Gaza).
- **70** Civil Defence staff killed while on duty (source: PCD).
- **150** journalists and media workers killed (source: GMO).

WATER AND SANITATION*

- **Three** water pipelines coming from Israel are partially operational.
- **Two out of three** water desalination plants are operational.
- **95,000m³ to 108,000 m³** of water per day produced over the past two weeks.
- **~340,000** tons of accumulated solid waste and two landfills remain inaccessible.

*Source: WASH Cluster

HEALTH*

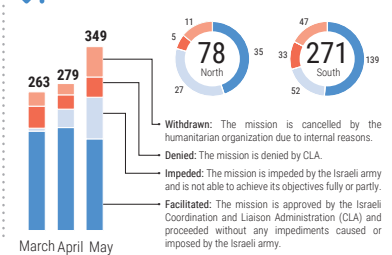
- **17** hospitals partially functional (3 in North Gaza, 7 in Gaza, 3 in Deir al Balah, 4 in Khan Younis).
- **19** hospitals are out of service.
- **7** field hospitals, including 4 fully functional and 3 partially functional.
- **39%** of primary health care centres are partially functional (38 out of 97).
- **25%** (6 out of 24) UNRWA health centres operational (source: UNRWA, as of 9 June).
- **11** Emergency Medical Teams (EMTs) deployed, none in northern Gaza.
- **>865,000** cases of acute respiratory infections (as of 26 May).
- **>485,000** cases of diarrhoea, incl. >113,600 children under five (as of 26 May).
- **46%** (**5,857** out of **12,760**) of critical patients who submitted requests for medical evacuation were approved; these include **38%** (**4,895**) who were medically evacuated abroad as of 7 May.
- As of 8 June, **1,550** patients (an average of 50 per day) have not been evacuated since the closure of Rafah Crossing, placing further stress on Gaza's few remaining health facilities.

*Source: WHO, unless otherwise noted

REPORTED DAMAGE

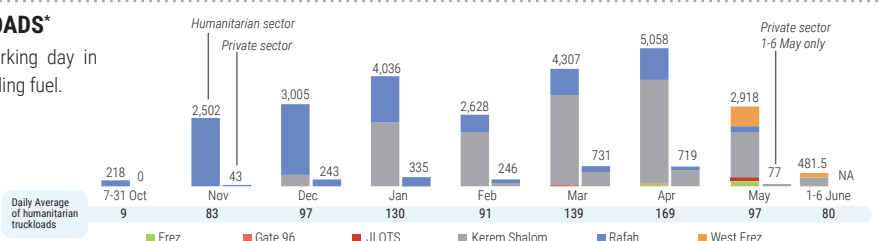
- **>60%** of residential buildings (source: World Bank, as of Jan 2024).
- **>80%** of commercial facilities (source: World Bank, as of Jan 2024).
- **155** health facilities (source: MoH Gaza).
- **187** UNRWA installations. (source: UNRWA).
- **130** ambulances (source: MoH Gaza).

HUMANITARIAN ACCESS IN MAY



INCOMING TRUCKLOADS*

- The pre-crisis average per working day in 2023 was 500 truckloads, including fuel.



*Commercial trucks are not captured in the totals following 7 May, as the UN has been unable to directly observe the arrival of private sector cargo at Kerem Shalom crossing. Fuel is not included.