

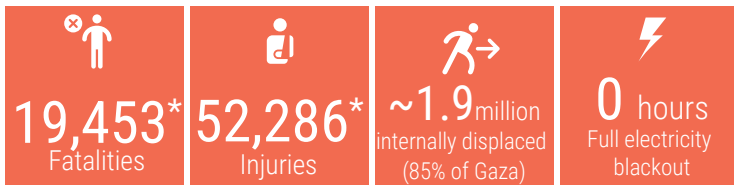
DAY 73

OVERVIEW

The snapshot provides a comprehensive overview of the ongoing humanitarian crisis in Gaza as of 18 December 2023, including casualties, particularly among women and children.

Significant damage has been inflicted upon critical infrastructure and essential services, affecting people's ability to maintain their dignity and basic living standards.

This snapshot highlights reported figures on the impact of hostilities on people in Gaza, where a major humanitarian crisis has unfolded.



*Sources: MoH Gaza

REPORTED CASUALTIES (Cumulative) as of 18 December 2023

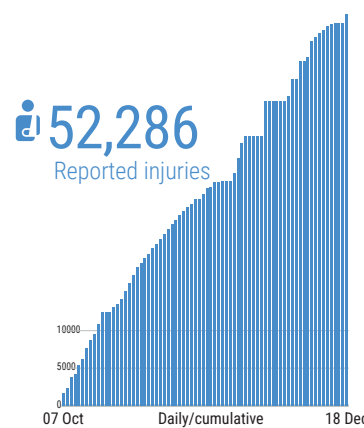
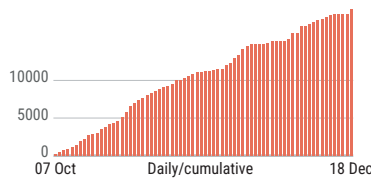
Palestinians*

19,453 Reported fatalities in addition to ~1,000 fatalities in Israel, including people involved in the 7 October attack

~5,153 Women
~7,729 Children
70% of Reported fatalities as of 11 December 2023

Families with multiple fatalities

1,680



Israelis**

Israel

Over 1,200*** Reported fatalities

1,162 identified fatalities, including at least 33 children

~5,400 Reported injuries
Gaza

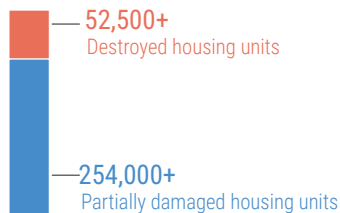
129 Reported fatalities **704** Reported injuries

133 hostages remain in Gaza (including soldiers and foreign nationals)

** According to Israeli media citing official sources
*** The reported estimate includes foreign nationals

*Sources: Ministry of Health, Government Media Office

DAMAGE*



- Over **60%** of Gaza's housing units reportedly destroyed or damaged
- 352** education facilities reportedly damaged
- 11** bakeries reportedly destroyed
- 22** hospitals and **52** health care centres out of service
- 102** ambulances damaged
- 20** WASH facilities damaged
- At least **3** churches and **112** mosques damaged

BASIC SERVICES AND LIVELIHOODS

FOOD SECURITY*

- 44% of households report very severe hunger
- 11% of households report severe hunger
- 31% of households report moderate hunger
- Situation in the north believed to be catastrophic

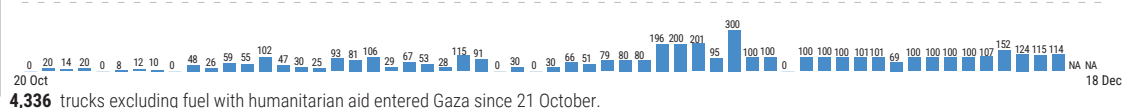
*Source: WFP survey among IDPs in the southern governorates, 3-12 December

WATER AND SANITATION

- Two** pipelines coming from Israel supply about 1,100 cubic metres per hour for the south and Middle area.
- No Access** to clean water in the northern governorates. Fuel shortage impacts: 60 water wells, 2 desalination plants, sewage stations and pumps, wastewater treatment.

INCOMING TRUCKLOADS

500 trucks including fuel pre-crisis average per working day in 2023



4,336 trucks excluding fuel with humanitarian aid entered Gaza since 21 October.

HEALTH

- Hospitals are under heavy strikes.
- The number of functioning hospitals has dropped from **36** to **8**

At high risk

At least **1,000** kidney failure, **>2,000** cancer patients, **130** neonates in incubators

Critical shortages

of drugs, blood products and supplies (Fuel at the hospitals is being severely rationed)

EDUCATION

625K (100%) Students with no access to education

Over 69% of all school buildings have sustained damage.

HUMANITARIAN OPERATION

- 136** UN staff killed: UNRWA: **135**; WHO: **1**
- At least **300** health workers killed
- 32** Civil Defence killed while on duty
- 96** Journalists killed

MOVEMENT AND ACCESS

- The Kerem Shalom crossing has been open since 17 December for approved goods. All other Israeli crossings are closed.
- The Rafah crossing with Egypt is open for approved goods, and for the movement of some wounded and sick people, and aid workers.
- Access to the sea and to areas near Israel's perimeter fence is restricted.

*GMO as of 15 Dec.