

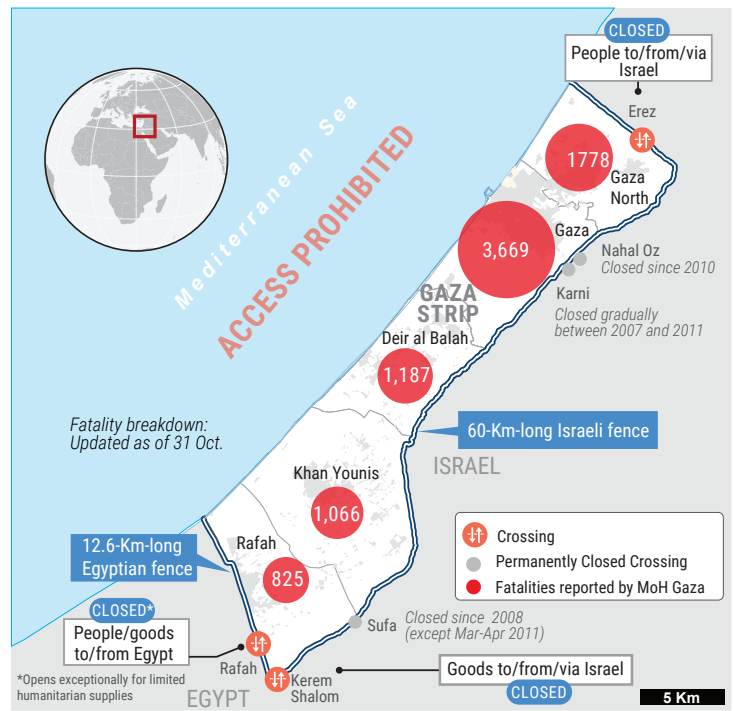
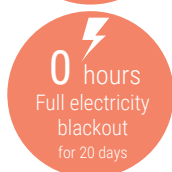
## DAY 25

### OVERVIEW

The snapshot provides a comprehensive overview of the ongoing humanitarian crisis in Gaza as of 31 October 2023, including casualties, particularly among women and children.

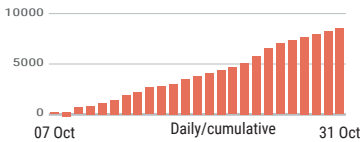
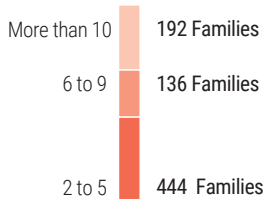
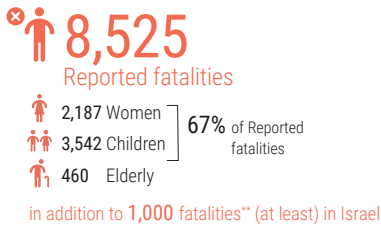
Significant damage has been inflicted upon critical infrastructure and essential services, affecting people's ability to maintain their dignity and basic living standards.

This snapshot highlights reported figures on the impact of hostilities on people in Gaza, where a major humanitarian crisis has unfolded.

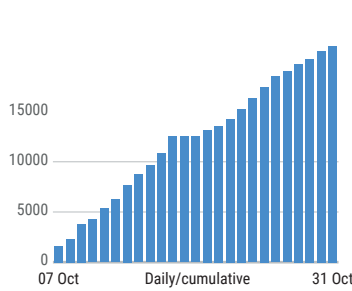


### REPORTED CASUALTIES (Cumulative) as of 31 October 2023

#### Palestinians\*



Other **2,000** people including **1,100** children reported missing and may be trapped under the rubble



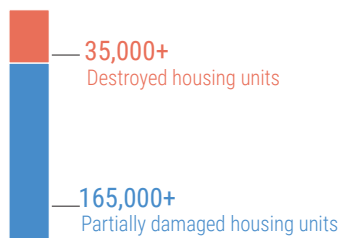
\*According to the Ministry of Health in Gaza

#### Israelis\*\*



\*\*Israelis and foreign nationals have been killed in Israel, according to the Israeli authorities (most killed on 7 October)

### DAMAGE\*



- At least **45%** of Gaza's housing units reportedly destroyed or damaged
- 232** education facilities reportedly damaged
- 11** bakeries reportedly destroyed
- 21** hospitals and **28** ambulances damaged
- 20** WASH facilities damaged
- At least **7** churches and **47** mosques damaged

\*Ministry of public works and housing as of 23 Oct.

### BASIC SERVICES AND LIVLIHOODS

#### FOOD SECURITY

Stocks sufficient for **7** days, but shops may run out in **5** days

The **only** operative mill cannot transform wheat due to electricity outages

**4-6 hours** average waiting time to receive half of normal bread portion

#### WATER AND SANITATION

**92%** less water consumption than pre-hostilities (average)

Most of **65** sewage pumping are not operational

**50%** leakage in a main water pipeline between Rafah and Khan Younis

**None** of the **3** water pipelines from Israel is functioning

#### HEALTH

**Shut down** over **1/3** of the hospitals and nearly **2/3** of primary health care shut down

**At high risk** At least **1,000** kidney failure, **9,000** cancer patients, **130** neonates in incubators

**Critical shortages** of drugs, blood products and supplies (**Fuel at the hospitals is being severely rationed**)

#### Evacuation orders

All **13** hospitals still operational in Gaza city and Northern Gaza have received evacuation orders

#### EDUCATION

**625K** students with no access to education

**Over 40%** of Gaza's education facilities have been hit

#### HUMANITARIAN OPERATION

At least **16** health workers, **67** UNRWA staff and **34** civil defence killed while on duty

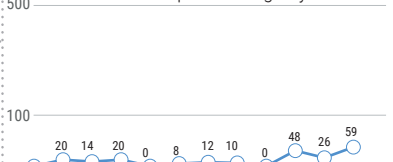
**82** attack on health care facilities, **44** UNRWA installations damaged

#### MOVEMENT AND ACCESS

Closure of crossings with Egypt and Israel, Prohibition of sea access and restrictions, near Israel's perimeter fence.

#### INCOMING TRUCKLOADS

**500 trucks** pre-crisis average per working day in 2023



**217** trucks with humanitarian aid entered Gaza since 21 October.