


DAY 243


Disclaimer: Figures that are yet-to-be verified by the UN are attributed to their source. Casualty numbers have been provided by the Ministry of Health (MoH) or the Government Media Office (GMO) in Gaza and the Israeli authorities. Previous data breakdowns provided in this snapshot of women and children killed were attributed to the GMO based on reported fatalities. The fatality breakdowns currently cited are those that the MoH in Gaza has recently fully identified out of the higher number of casualties they report.

KEY FIGURES




36,586
Palestinian fatalities

Source: MoH Gaza




~1.7 million
internally displaced persons
(75% of Gaza)

Source: UNRWA



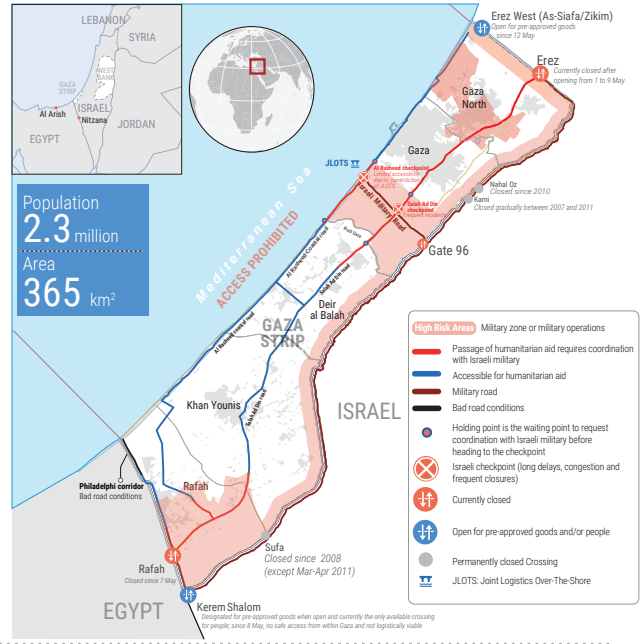
1.1 million
people projected to face catastrophic levels of food insecurity (IPC Phase 5)

Source: IPC projection for 16 March - 15 July 2024



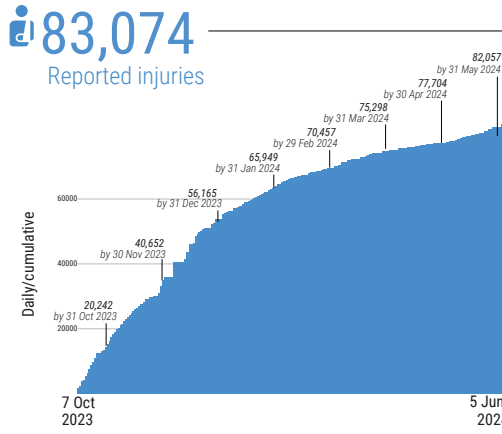
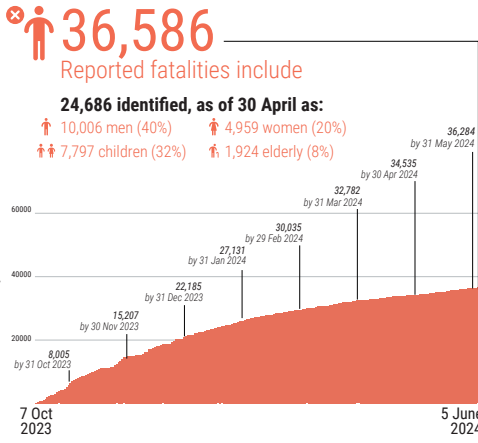
0 hours
Full electricity blackout

Source: GEDCO



REPORTED CASUALTIES (Cumulative) as of 5 June 2024

Palestinians*



Israelis**

Israel

- Over **1,200** Reported fatalities
- 1,162 identified fatalities, including at least 33 children
- ~**5,400** Reported injuries

Gaza****

- 293** Reported fatalities
- 1,889** Reported injuries
- estimated 124 hostages remain in Gaza

** According to Israeli media citing official sources.
*** This includes fatalities on 7 October and the immediate aftermath, including foreign nationals.
**** The reported Israeli casualties are soldiers killed or injured since the start of the ground operation.

HEALTH*

- 16 hospitals partially functional (2 in North Gaza, 7 in Gaza, 3 in Deir al Balah, 4 in Khan Younis).
 - 20 hospitals are out of service.
 - 6 field hospitals, including 3 fully functional (2 in Khan Younis, 1 in Rafah) and 3 partially functional (1 in Deir al Balah, 2 in Rafah).
 - 39% of primary health care centres are partially functional (38 out of 97).
 - 25% (6 out of 24) UNRWA health centres were operational (source: UNRWA, as of 29 May).
 - 12 Emergency Medical Teams (EMTs) deployed, none in northern Gaza.
 - ~844,000 cases of acute respiratory infections (as of 19 May).
 - ~470,600 cases of diarrhea, including ~112,800 children under five (as of 19 May).
- *Source: WHO, unless otherwise noted

FOOD SECURITY

- 265K people facing crisis levels of food insecurity (IPC Phase 3).*
 - 854K people facing emergency levels of food insecurity (IPC Phase 4).*
 - 1.1 million people facing catastrophic levels of food insecurity (IPC Phase 5).*
 - 60-70% of meat and dairy-producing livestock killed or prematurely slaughtered (source: FAO).
- * Source: IPC projection for 16 March - 15 July 2024

WATER AND SANITATION*

- Three water pipelines coming from Israel are operational: Al Muntar Line (North) at 83% of capacity, Bani Saeed Line (Middle) at 76% of capacity, and Bani Suhaila Line (South) at 63% of capacity.
 - ~60% of assessed WASH infrastructure destroyed or damaged.
 - Two out of three water desalination plants operational. The third plant has been out of service since October 2023.
 - ~270,000 tons of accumulated solid waste (source: Union of Gaza Strip Municipalities).
- *Source: WASH Cluster, unless otherwise noted

PROTECTION

- ~1.7 million internally displaced persons, (source: UNRWA).
- >1 million children in need of mental health and psycho-social support, (source: UNICEF).
- ~17,000 children are unaccompanied or separated, (source: UNICEF).
- At least 270 aid workers killed (263 nationals, 7 foreigners), including:
 - 196 UN staff - UNRWA: 192; WHO: 1; UNDP: 1; UNOPS: 1; UNDSS: 1.
 - 32 PRCs staff and volunteers, including 19 while on duty.
 - At least 42 other aid workers.
- 493 health workers killed, including at least 15 also counted under aid workers above (source: MoH Gaza).
- 70 Civil Defence staff killed while on duty (source: PCD).
- 147 journalists and media workers killed (source: GMO).

REPORTED DAMAGE

- >60% of residential buildings (source: World Bank, as of Jan 2024).
- >80% of commercial facilities (source: World Bank, as of Jan 2024).
- 155 health facilities (source: MoH Gaza).
- 186 UNRWA installations. (source: UNRWA).
- 130 ambulances (source: MoH Gaza).

NUTRITION*

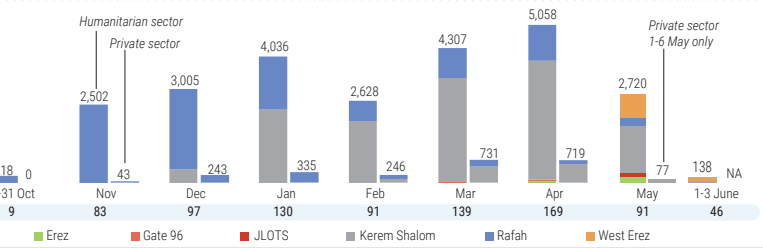
- ~31% of children under the age of two in northern Gaza suffer from acute malnutrition.
 - ~10% of children under the age of two in Rafah suffer from acute malnutrition.
 - ~50,000 children are estimated to require treatment for acute malnutrition in 2024.
- *Source: Nutrition Cluster

EDUCATION*

- ~625,000 students with no access to education.
 - ~6,830 students and 334 educational staff killed (source: MoE, as of 4 June).
 - 88% of all school buildings (516 out of 563) sustained some level of damage, including 54% directly hit, 22% damaged, & 15% likely or possibly damaged (as of 3 May).
 - 68% of school buildings used as IDP shelters were directly hit or damaged (as of 3 May).
- *Source: Education Cluster, unless otherwise noted

INCOMING TRUCKLOADS*

The pre-crisis average per working day in 2023 was 500 truckloads, including fuel.



SHELTER*

- 1.5 m² average space per person in IDP shelters, below the minimum standard of 3.5 m² per person.
 - ~100,000 households estimated to be in urgent need of shelter support.
- *Source: Shelter Cluster