

DAMAGE ASSESSMENT IN GAZA CITY, GAZA STRIP - OCCUPIED PALESTINIAN TERRITORY

Complex
Emergency

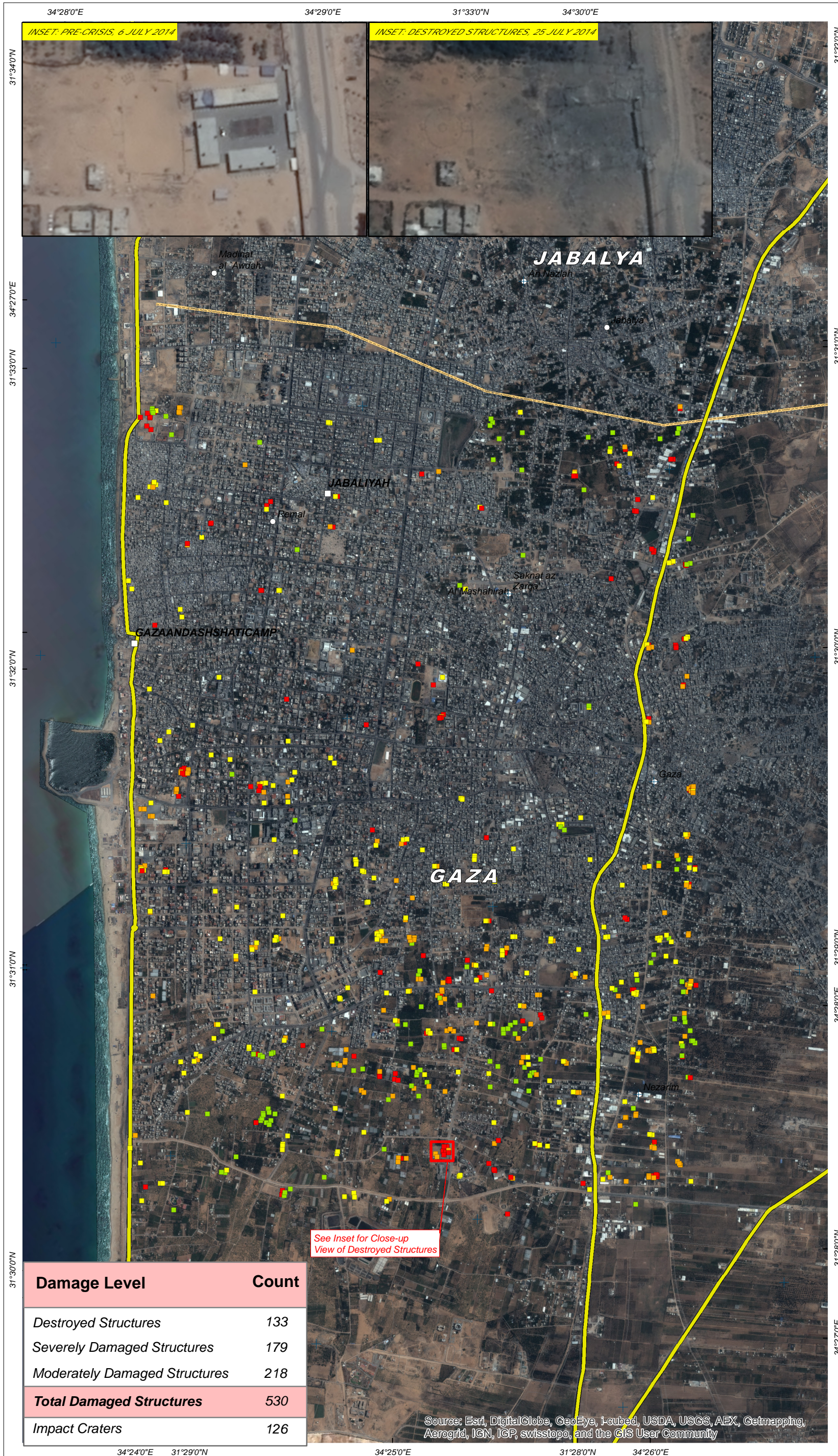
Production Date:
7/31/2014

Version 1.0

Glide Number:
CE20140715PSE



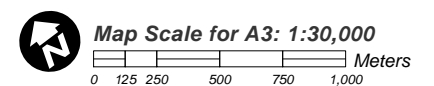
Analysis with Pleiades Data Acquired 6 July and 25 July 2014



This map illustrates satellite-detected damage and destruction in central Gaza City, Gaza Strip, resulting from ongoing violence in the area. Using a satellite image collected 25 July 2014 by the Pleiades satellite, and compared with a pre-crisis Pleiades image collected 6 July 2014, UNOSAT analysis has identified 133 destroyed structures, 179 severely damaged structures, and 218 moderately damaged structures. In addition, 126 craters on roads and in agricultural and non-urbanized areas are also visible as of 25 July 2014. This is a preliminary analysis and has not yet been validated in the field. Please send ground feedback to UNITAR/UNOSAT.

LEGEND

- Destroyed Structure
- Severely Damaged Structure
- Moderately Damaged Structure
- Crater / Impact
- City / Town
- Populated Place
- Highway/Primary Road
- Secondary/Local Road
- Province Border



Satellite Data (1): Pleiades
Imagery Dates: 25 July 2014
Resolution: 50 cm
Copyright: CNES 2014, Distribution Airbus Defence and Space
Source: Airbus Defence and Space
Satellite Data (2): Pleiades
Imagery Date: 06 July 2014
Copyright: CNES 2014, Distribution Airbus Defence and Space
Source: Airbus Defence and Space
Road Data: Google Map Maker / OSM / ESRI
Other Data: USGS, UNCS, NASA, NGA
Analysis: UNITAR / UNOSAT
Production: UNITAR / UNOSAT
Analysis conducted with ArcGIS v10.2

Coordinate System: WGS 1984 UTM Zone 36N
Projection: Transverse Mercator
Datum: WGS 1984
Units: Meter

The depiction and use of boundaries, geographic names and related data shown here are not warranted to be error-free nor do they imply official endorsement or acceptance by the United Nations. UNOSAT is a program of the United Nations Institute for Training and Research (UNITAR), providing satellite imagery and related geographic information, research and analysis to UN humanitarian and development agencies and their implementing partners.

This work by UNITAR/UNOSAT is licensed under a Creative Commons Attribution-NonCommercial-ShareAlike 3.0 Unported License.

This work by UNITAR/UNOSAT is licensed under a



UNOSAT

Contact Information: unosat@unitar.org
24/7 Hotline: +41 76 487 4998
www.unitar.org/unosat

Damage Level	Count
Destroyed Structures	133
Severely Damaged Structures	179
Moderately Damaged Structures	218
Total Damaged Structures	530
Impact Craters	126

Source: Esri, DigitalGlobe, GeoEye, i-cubed, USDA, USGS, AEX, Getmapping, Aerogrid, IGN, IGP, swisstopo, and the GIS User Community