

# DAMAGE ASSESSMENT IN RAFAH, GAZA STRIP - OCCUPIED PALESTINIAN TERRITORY

Analysis with Pleiades Data Acquired 6 July and 1 August 2014

This map illustrates satellite-detected damage and destruction in the Rafah area of Gaza Strip, resulting from recent violence in the area. Using a satellite image collected 1 August 2014 by the Pleiades satellite, and compared with a pre-crisis Pleiades image collected 6 July 2014, UNOSAT analysis has identified 525 destroyed structures, 165 severely damaged structures, 116 moderately damaged structures, 165 severely damaged structures, and 787 moderately damaged structures in the analyzed area. In addition, 787 craters on roads and in agricultural and non-urbanized areas are also visible as of 1 August 2014. Further analysis will be done as additional imagery is collected. This is a preliminary analysis and has not yet been validated in the field. Please send ground feedback to UNITAR/UNOSAT.

and 116 moderately damaged structures in the analyzed area. In addition, 787 craters on roads and in agricultural and non-urbanized areas are also visible as of 1 August 2014. Further analysis will be done as additional imagery is collected. This is a preliminary analysis and has not yet been validated in the field. Please send ground feedback to UNITAR/UNOSAT.

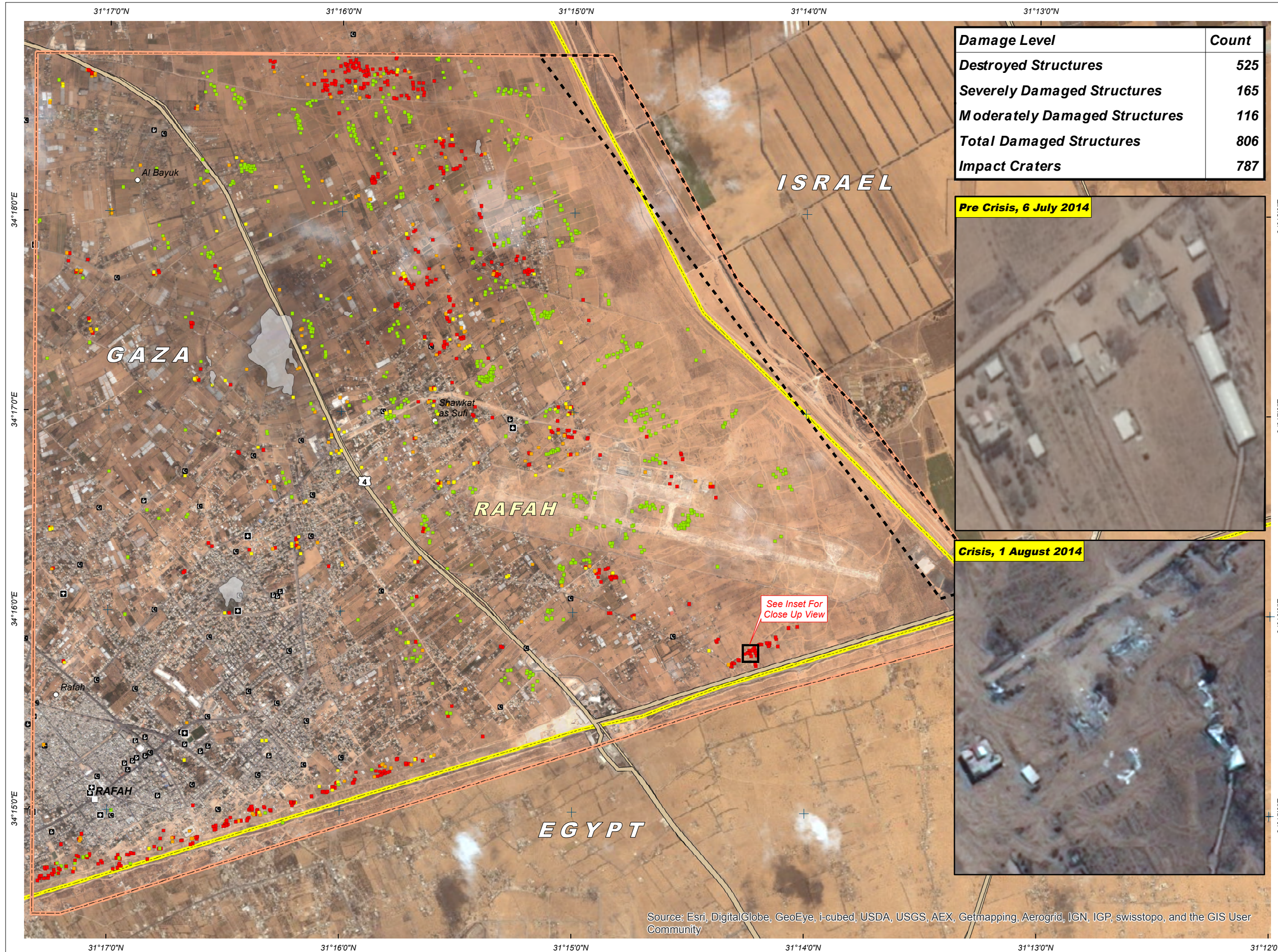
**Complex  
Emergency**



Production Date:  
07/08/2014

Version 1.0

Activation Number:  
CE20140715PSE



Damage Level	Count
Destroyed Structures	525
Severely Damaged Structures	165
Moderately Damaged Structures	116
Total Damaged Structures	806
Impact Craters	787



- LEGEND**
- Destroyed Structure
  - Severely Damaged Structure
  - Moderately Damaged Structure
  - Crater / Impact
  - City / Town
  - ⊕ Hospital
  - ⊕ School
  - ⊕ Mosque
  - Primary Road
  - Secondary Road
  - 1949 Armistice Line
  - ☐ Smoke Obstruction
  - ⊖ Downsampled Area
  - ⊖ UNOSAT Analysis Extent

**Map Scale for A3: 1:30,000**  

 Kilometers

Satellite Data (1) (2): Pleiades  
 Imagery Dates (1) (2): 6 July 2014; 1 August 2014  
 Resolution: 50 cm  
 Copyright: CNES 2014, Distribution Airbus Defence and Space  
 Source: Airbus Defence and Space  
 Road Data: OSM, ESRI  
 Other Data: USGS, UNCS, NGA  
 Analysis: UNITAR / UNOSAT  
 Production: UNITAR / UNOSAT  
 Analysis conducted with ArcGIS v10.2

Coordinate System: WGS 1984 UTM Zone 36N  
 Projection: Transverse Mercator  
 Datum: WGS 1984  
 Units: Meter

The depiction and use of boundaries, geographic names and related data shown here are not warranted to be error-free nor do they imply official endorsement or acceptance by the United Nations. UNOSAT is a program of the United Nations Institute for Training and Research (UNITAR), providing satellite imagery and related geographic information, research and analysis to UN humanitarian and development agencies and their implementing partners.

This work by UNITAR/UNOSAT is licensed under a Creative Commons Attribution-NonCommercial-ShareAlike 3.0 Unported License.



# UNOSAT

Contact Information: [unosat@unitar.org](mailto:unosat@unitar.org)  
 24/7 Hotline: +41 76 487 4998  
[www.unitar.org/unosat](http://www.unitar.org/unosat)

Source: Esri, DigitalGlobe, GeoEye, i-cubed, USDA, USGS, AEX, Getmapping, Aerogrid, IGN, IGP, swisstopo, and the GIS User Community