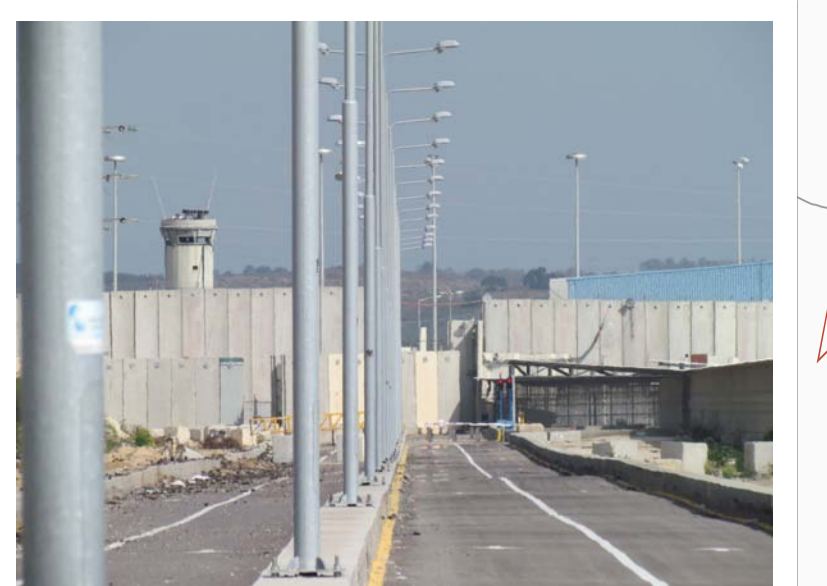




Mediterranean Sea

Fishing Limit Enforced by IDF
From October 2006

Fishing Limit Enforced by IDF
Since January 2009

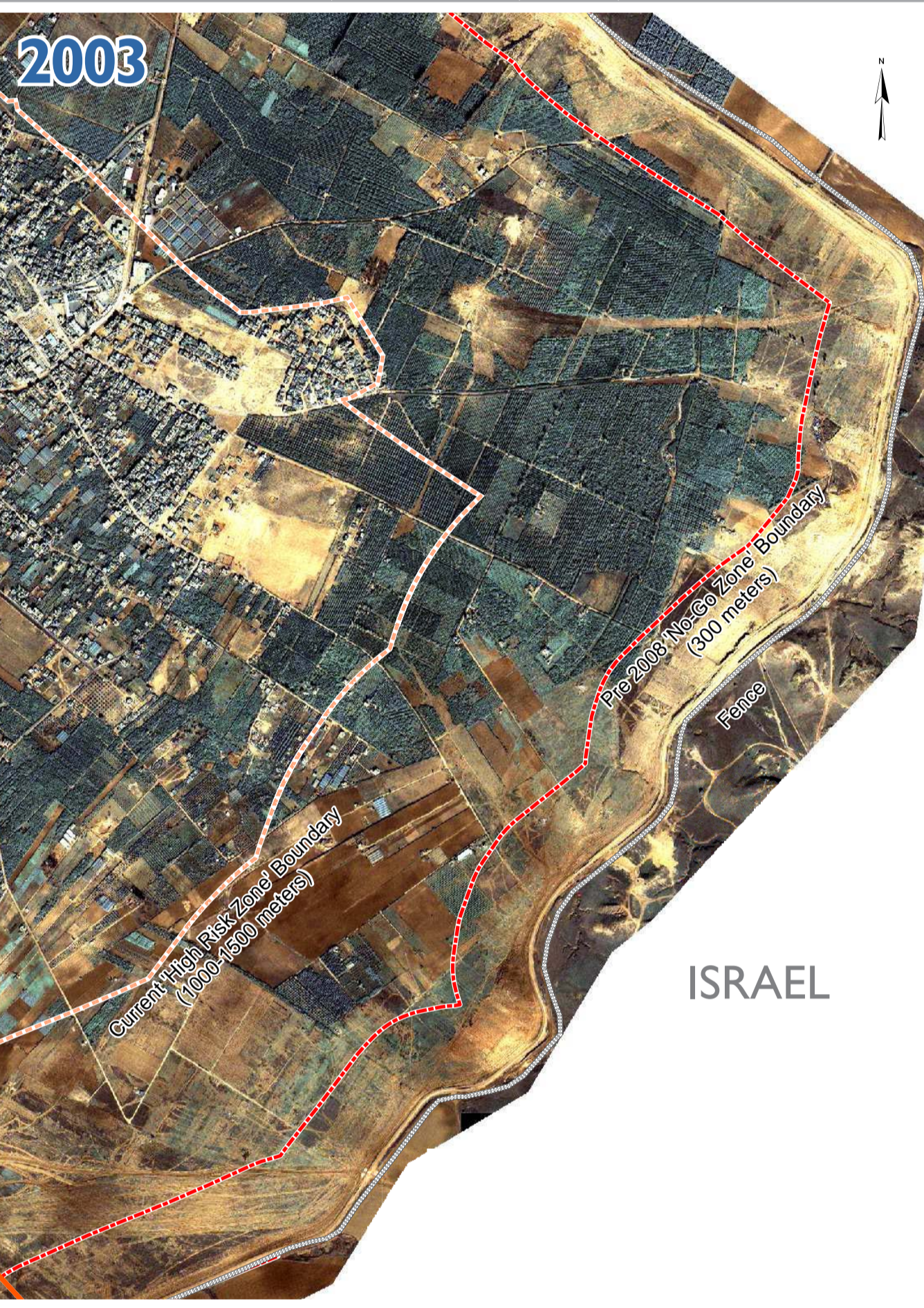


EREZ CROSSING (BEIT HANOUN)
Open six days a week for the movement of aid workers and limited number of authorized Palestinian medical and humanitarian cases only.

Nahal Oz / Fuel Pipeline
Closed since January 2010

Karni Crossing (Al Montar)
Closed since June 2007
(conveyor belt closed since March 2011)

LOSS OF AGRICULTURAL LAND IN BEIT HANOUN



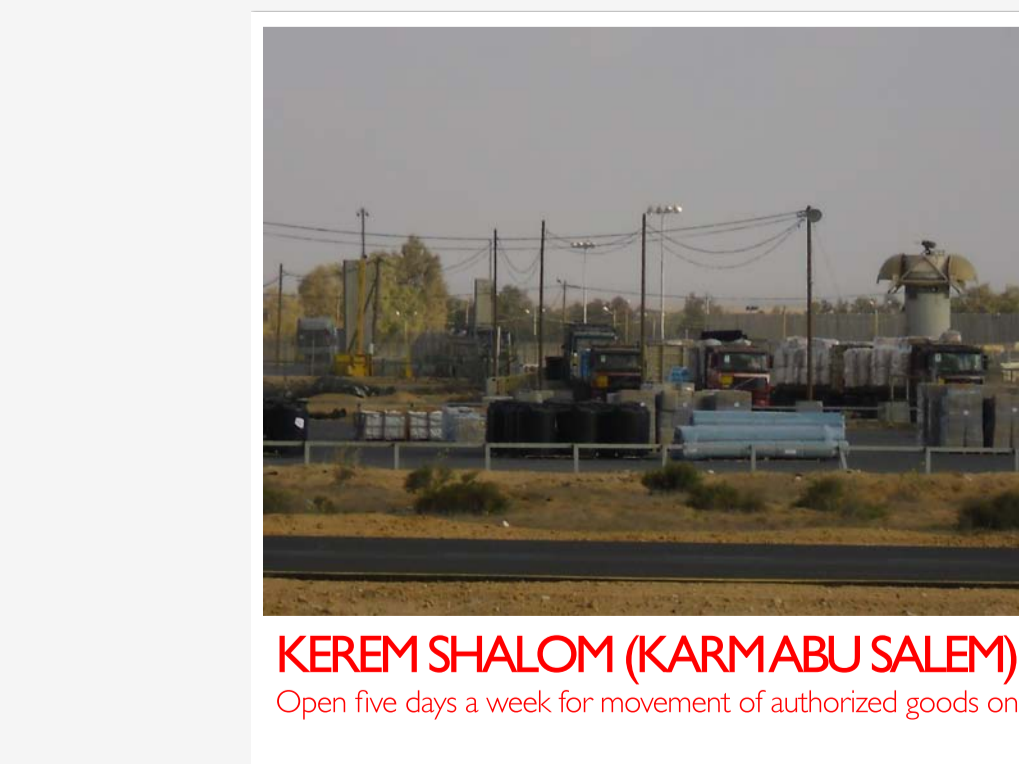
Scan it! Navigate!
with QR reader App with Avenza PDF Maps App

ISRAEL

occupied Palestinian territory: Governorates



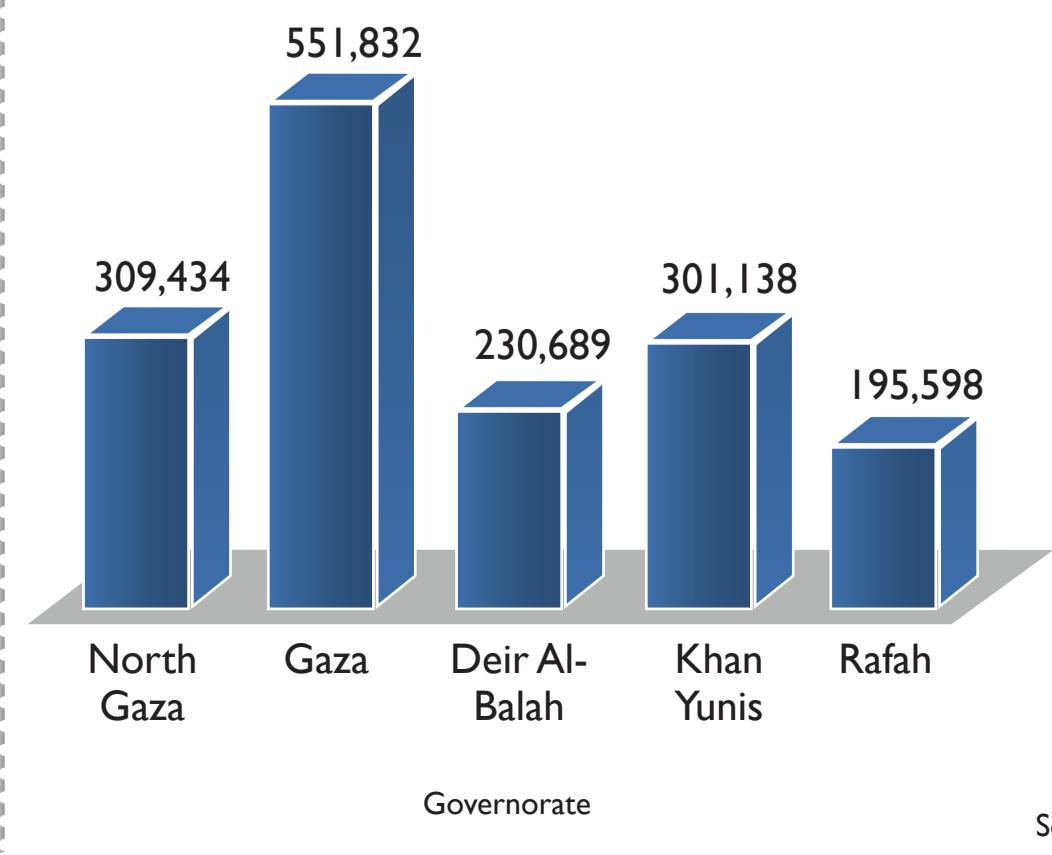
RAFAH (AL 'AWDA)
Open six days a week for the movement of a number of authorized persons, Palestinian medical and humanitarian cases only.



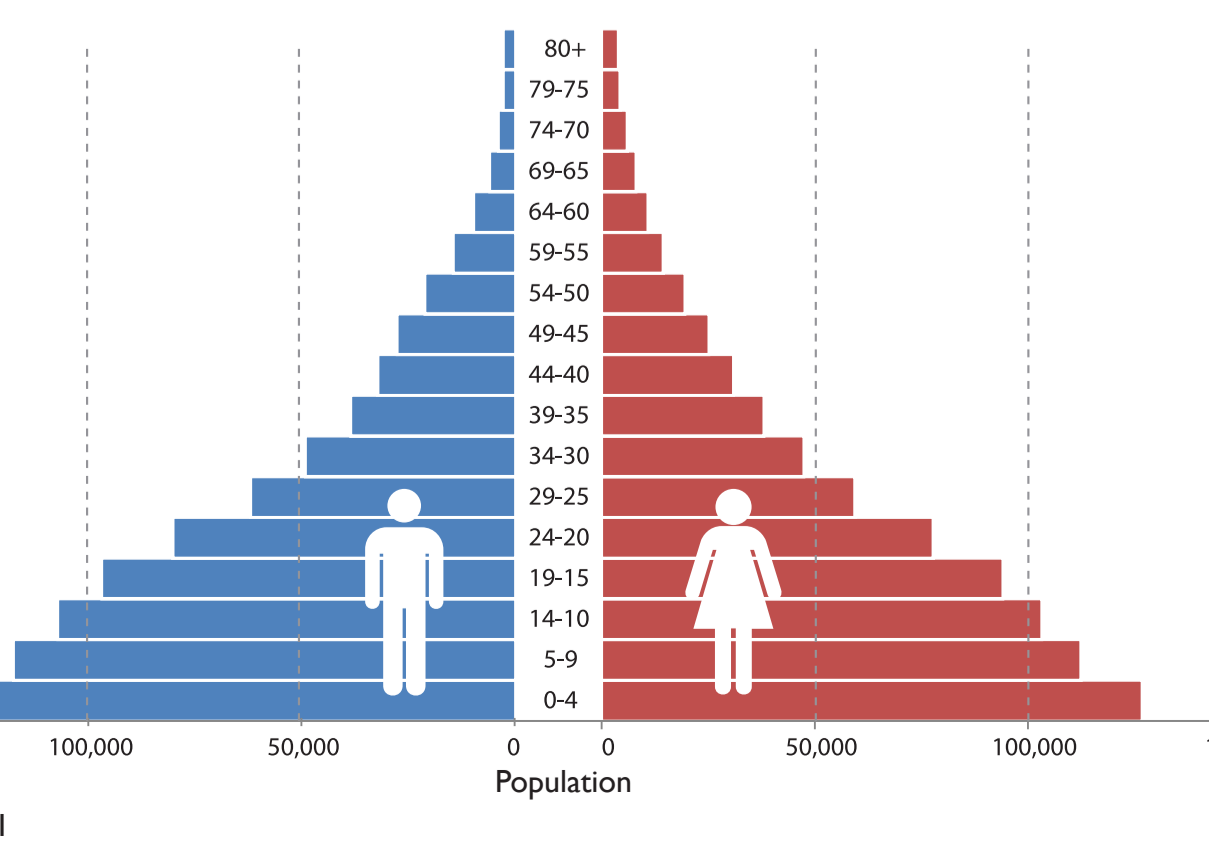
KEREM SHALOM (KARMABU SALEM)
Open five days a week for movement of authorized goods only.

EGYPT

GAZA STRIP GOVERNORATE POPULATION



GAZA STRIP POPULATION 2011 AGE DISTRIBUTION



ACCESS AND PHYSICAL CLOSURES

- CROSSING POINTS**
 - Open
 - Closed but Open for Exceptional Cases
 - Closed
- CLOSED AND RESTRICTED AREAS**
 - 500 Meter Effective No-Go Zone*
 - High Risk Zone
- FENCES AND BARRIERS**
 - Concrete Wall
 - Double Wire Fence with Watch Towers
 - Effective Fishing Limit
 - Former Fishing Limit
 - Philadelphi Corridor
- ROADS**
 - Main Road
 - Regional Road
 - Local Road
 - Track

GAZA STRIP

- LOCATIONS**
 - UN Compound
 - Bridge
 - Hospital
 - Hotel Area
 - Landmark
- PALESTINIAN AREAS**
 - Built-up Area
 - Refugee Camps
 - Gaza Neighbourhood
 - Governorate Boundary
- ISRAEL**
 - Israeli Built-up Areas
 - Roads
- Other symbols:**
 - Wastewater Treatment Plant
 - Sewage Outlet (In Constant Use)
 - Sewage Outlet (Overflow Only)
 - Wharf
 - Main City
 - over 50000
 - 1001 to 50000
 - 1001 to 2000
 - under 1000

* In May 2010, the Israeli army declared a no-go zone of 300 meters width from the fence. However, an OCHA/WFP study concluded that the width of the enforced no-go zone is 500 meters from the fence.



Access and closure data is as of August 2011. It is collected by OCHA staff and is subject to change. Aerial photos are as of 2008. Cartography: OCHA Information Management unit. Map Produced: August 2011. Base data and statistics: OCHA, JRC, PA-MOPIC. For comments contact <ochaopt@un.org> or tel. +972 (0)2 582-9962. www.ochaopt.org

MAP IS PROVIDED FREE OF CHARGE NOT FOR SALE

The designations employed and the presentation of material on this map do not imply the expression of any opinion whatsoever on the part of the Secretariat of the United Nations concerning the legal status of any country, territory, city or area or of its authorities, or concerning the delimitation of its frontiers or boundaries. Reproduction and use of this material is only permitted with express reference to "United Nations OCHA" as the source.