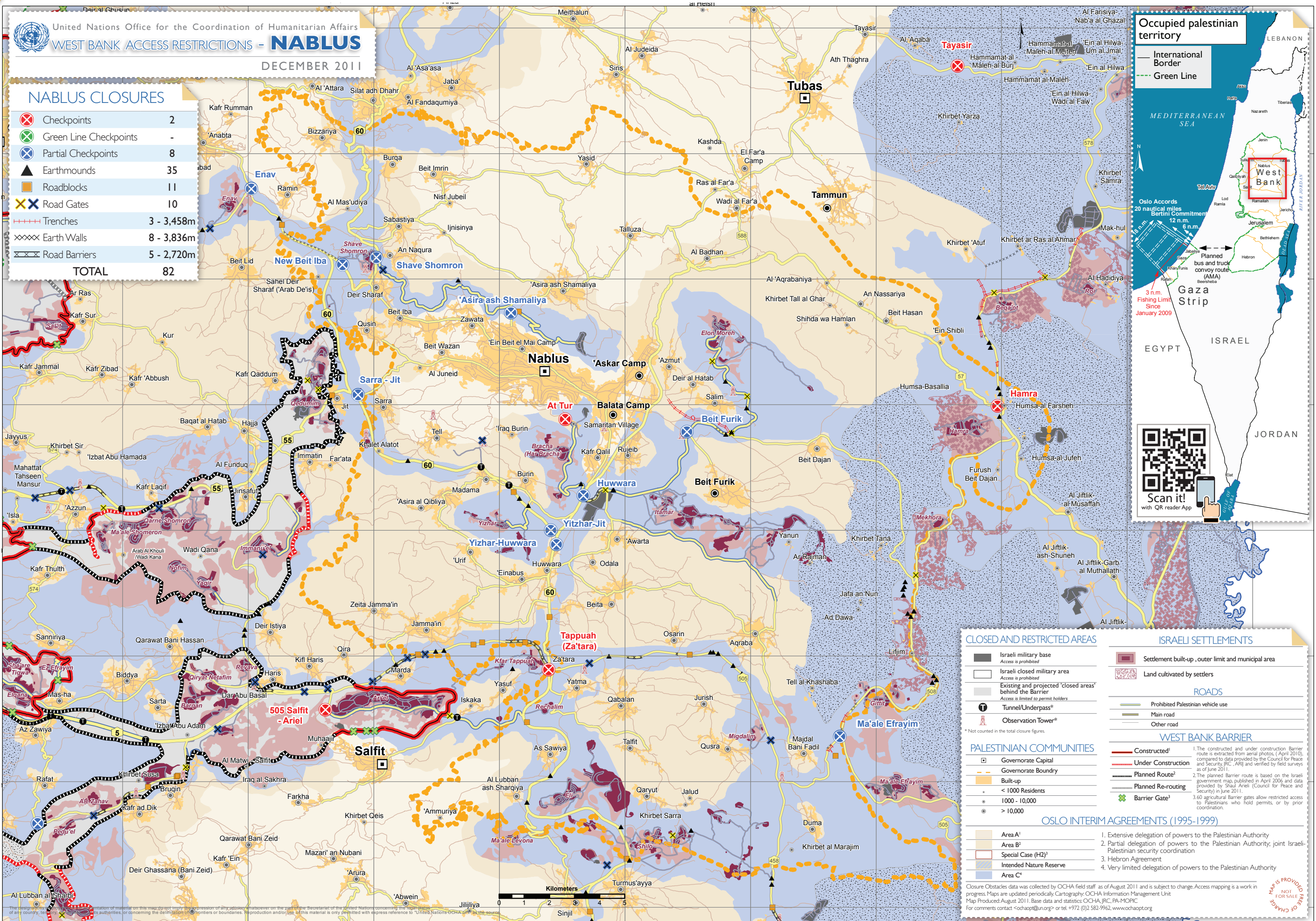


NABLUS CLOSURES

⊗ Checkpoints	2
⊗ Green Line Checkpoints	-
⊗ Partial Checkpoints	8
▲ Earthmounds	35
■ Roadblocks	11
⊗ Road Gates	10
--- Trenches	3 - 3,458m
⊗ Earth Walls	8 - 3,836m
⊗ Road Barriers	5 - 2,720m
TOTAL	82



Occupied Palestinian territory

- International Border
- Green Line

Oslo Accords
 20 nautical miles
 12 n.m.
 6 n.m.
 3 n.m. Fishing Limit Since January 2009

Planned bus and truck convoy route (AMA) Beersheba

Scan it! with QR reader App

CLOSED AND RESTRICTED AREAS

- Israeli military base
Access is prohibited
 - Israeli closed military area
Access is prohibited
 - Existing and projected 'closed areas' behind the Barrier
Access is limited to permit holders
 - Tunnel/Underpass*
 - Observation Tower*
- * Not counted in the total closure figures.

PALESTINIAN COMMUNITIES

- Governorate Capital
- Governorate Boundary
- Built-up
- < 1000 Residents
- 1000 - 10,000
- > 10,000

OSLO INTERIM AGREEMENTS (1995-1999)

- Area A¹
- Area B²
- Special Case (H2)³
- Intended Nature Reserve
- Area C⁴

ISRAELI SETTLEMENTS

- Settlement built-up, outer limit and municipal area
- Land cultivated by settlers

ROADS

- Prohibited Palestinian vehicle use
- Main road
- Other road

WEST BANK BARRIER

- Constructed¹
- Under Construction
- Built-up
- Planned Re-routing
- Barrier Gate³

1. The constructed and under construction Barrier route is extracted from aerial photos (April 2010), compared to data provided by the Council for Peace and Security (CPC, ARJ) and verified by field surveys as of June 2011.
2. The planned Barrier route is based on the Israeli government map, published in April 2006 and data provided by Shaul Aneli (Council for Peace and Security) in June 2011.
3. 360 agricultural Barrier gates allow restricted access to Palestinians who hold permits, or by prior coordination.
4. Extensive delegation of powers to the Palestinian Authority
5. Partial delegation of powers to the Palestinian Authority; joint Israeli-Palestinian security coordination
6. Hebron Agreement
7. Very limited delegation of powers to the Palestinian Authority

Closure Obstacles data was collected by OCHA field staff as of August 2011 and is subject to change. Access mapping is a work in progress. Maps are updated periodically. Cartography: OCHA Information Management Unit
 Map Produced: August 2011. Base data and statistics: OCHA, JRC, PA-MOPIC
 For comments contact <ochapt@un.org> or tel. +972 (0)2 582-9962, www.ochapt.org



MAP IS PROVIDED FREE OF CHARGE NOT FOR SALE