



UNITED NATIONS

Office for the Coordination of Humanitarian Affairs
occupied Palestinian territory

THE MONTHLY HUMANITARIAN MONITOR

JUNE 2012



Photo by 'Ein Shibli village council

Israeli military exercises in the village of 'Ein Shibli (Nablus), June 2012

June Overview

Palestinian civilians in Gaza continue to face significant threats to their life, security and property as a result of hostilities between Palestinian armed groups and Israeli forces. June witnessed a significant increase in armed hostilities, resulting in the deaths of 15 Palestinians, including five civilians, over 50 civilian injuries, and damage sustained to property, including schools. During the escalation, Palestinian armed factions, including Hamas, shot rockets and mortar shells indiscriminately at multiple locations in southern Israel, resulting in the death of an Israeli soldier, and the injury of another. Palestinian rocket fire that fell short of their intended targets also caused the deaths of two Palestinian children. Under international humanitarian law (IHL), all parties

TABLE OF CONTENTS

- The human cost of armed conflict.....3
- Demolitions and displacement on the rise4
- Barrier Update: Al Walaja5
- Improved flow of people through
Rafah Crossing7
- Increase in fuel from the tunnels does little
to alleviate ongoing electricity crisis.....7
- Quarterly Humanitarian Access Update9



to a conflict should ensure that civilians are, to the extent possible, protected from the effects of hostilities and must comply with the principles of distinction, proportionality and precaution in attack.

Also in Gaza, shortages of power and fuel continue to disrupt daily life, including essential services. This month saw the start of industrial fuel transfers donated by the Government of Qatar, and an increase in fuel delivered through the tunnels along Gaza's border with Egypt. However, due to a decrease in fuel purchases from the Palestinian Authority in the West Bank and private sector supplies, all-in-all total there was only an 11 per cent increase in fuel available to operate the Gaza Power Plant (GPP) in June. The limited impact of these stop-gap measures once again demonstrates that to adequately resolve Gaza's chronic fuel crisis, a sustainable and long-term solution must be found for the legitimate transfer of fuel for the GPP.

One of the few positive developments in Gaza in recent years was the reopening of the Rafah border crossing between Gaza and Egypt in June 2010, which has allowed for some increase in the number of people exiting Gaza to the outside world. Despite a five day closure in June due to security considerations and the Egyptian elections there was an 11 per cent increase in travelers. However, Palestinians crossing in 2012, only represent 67 per cent of those who crossed in the first half of 2006, before the Rafah crossing was restricted, and improvements in the crossing have not succeeded in facilitating movement between Gaza and the West Bank.

In the West Bank, the forced displacement of Palestinians continued in June, due to the Israeli authorities' demolition of Palestinian-owned structures lacking Israeli-issued building permits. During the first six months of 2012, the monthly average of such demolitions increased by over 20 per cent in comparison with the monthly average

for 2011. The structures demolished included residential shelters, animal barracks and water cisterns, funded by international donors providing basic humanitarian assistance to vulnerable populations in the West Bank.

In addition, in June, scores of families in Area C were displaced, for varying time periods during training exercises conducted by the Israeli military. Some 18 per cent of the West Bank is designated as "firing zones," closed military areas for military training. Approximately 5,000 Palestinians reside in these areas, predominantly herders, who rely on access to grazing land for their livelihood. Many of the communities have sustained multiple waves of displacement and property destruction while humanitarian agencies face restrictions in meeting the basic needs of these communities: humanitarian assistance given in response to demolitions has been destroyed or confiscated by the Israeli authorities.

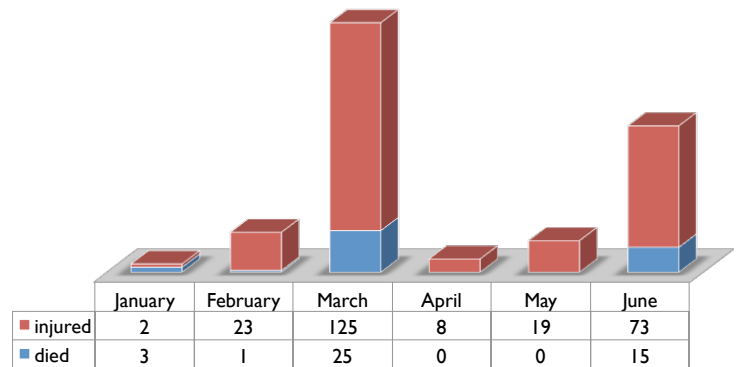
As the occupying power, Israel has an obligation to protect the Palestinian population. IHL explicitly prohibits the destruction of civilian property, unless such destruction is absolutely necessary for military reasons, as well as the forcible transfer or displacement of individuals or communities. Under IHL, the occupying power is also obliged to facilitate the operations of international organizations delivering humanitarian assistance. In the past three months the access of humanitarian staff in various parts of the oPt has been characterized by mixed trends (see new Quarterly section). In the West Bank, there were rising demands for searches of UN vehicles at checkpoints between Bethlehem and Jerusalem, in contravention to the UN Convention on Privileges and Immunities. On the other hand, the average processing time for Gaza permits for INGO international staff dropped from 32 to 11 days compared to the previous quarter. Additionally the Israeli authorities have approved 60 3-month long permits for UN Gaza staff and the overall approval rate has remained above 80 per cent.

THE HUMAN COST OF ARMED CONFLICT

June 2012 witnessed the most significant increase in armed hostilities between the Israeli military and Palestinian armed groups in Gaza since March. The escalation began on 1 June, following a clash between an armed Palestinian man and Israeli soldiers near the Gaza- Israel separation fence that left the Palestinian and an Israeli soldier dead.

Following the incident, between 1- 23 June, 17 Palestinians were killed (including six civilians), and 73 others, including 61 civilians (five women) were injured. In addition, one Israeli soldier was killed (*see above*), and another was injured. The majority of the Palestinian casualties were from Israeli air strikes, tank shelling, and gunfire from observation posts. The air strikes targeted armed

2012 Palestinian casualties 44 killed, 250 injured



groups, military training bases, open fields, metal shops, and a number of commercial structures. In the same period, Palestinian armed groups fired 187 projectiles including Grad rockets and mortar shells from Gaza Strip at Israeli military positions and into southern Israel.

CAUGHT IN THE CONFLICT

On 20 June, 2012, the day he died, twelve-year-old Ma'moun Aldam called his parents, telling them how afraid he was of the drones in the sky. The family had wanted to build a storage room at their farm, and Ma'moun had offered to accompany the contractor to the location of the farm. After the contractor left, he stayed behind to wait for his parents.

Receiving his phone call, his parents rushed to the farm. They all sat under a tree to get some rest and shade. They did not anticipate any attacks from the overhead drones: "We were not armed. We are civilians. The trees in the farm were recently planted, so they are still small. Anyone could see from above that we were just civilians so we did not expect to be attacked."

Ma'moun made his parents coffee and then started playing with his football: "He was playing about 20 meters from where we were resting and I asked him to come back. Suddenly, I heard an explosion. I saw dust, smoke and fire where Ma'moun had been standing. I heard him scream once, and then he went quiet. I kept calling out for him, but he did not answer back."

Ma'moun's mother, Amna, desperately called for her son as she rushed to where he had been playing: "There was dust everywhere and I could not see anything. When I finally saw Ma'moun, he was lying on the ground and there was a lot of blood around him. His legs had been torn off. There was shrapnel all over his body. His clothes were burned and he was almost naked. He was dead."

"I held him and took him to his father so he could touch his face and say goodbye. I found my husband bleeding heavily from his head. His left hand and right leg were also bleeding. He was touching his forehead and asking me if it was sweat. He is diabetic and has high blood pressure, so I thought he was going to die from all the bleeding. I was screaming for people to come and help us."

Two ambulances arrived on the farm shortly afterwards and rushed Ma'moun's father to hospital. They also took what was left of Ma'moun's body.

This testimony was taken by the Palestinian Centre for Human Rights

Of particular concern, the armed hostilities resulted in the deaths of four Palestinian children and the injury of 20 others. Two children were killed and 14 others injured as a result of Israeli airstrikes, and two Palestinian children killed, and four others injured, as a result of Palestinian rockets that fell short of their targets.

Human rights groups reported some 35 civilian houses and several public facilities, including two schools, damaged as a result of Israeli airstrikes. A number of residential buildings were reported to have sustained damage as a result of these projectiles. The escalation continued until 23 June, when a tacit truce, or “Calm”, was mediated by Egyptian interlocutors between the armed Palestinian groups and Israel.

DEMOLITIONS AND DISPLACEMENT ON THE RISE

Scores of families displaced or otherwise affected during short-term military training

The Israeli authorities’ demolition of Palestinian-owned structures in the West Bank is again on the rise. Among those structures affected are residential shelters and structures related to families’ livelihoods, such as animal barracks and water cisterns, as well as donor-funded humanitarian assistance provided to vulnerable families.

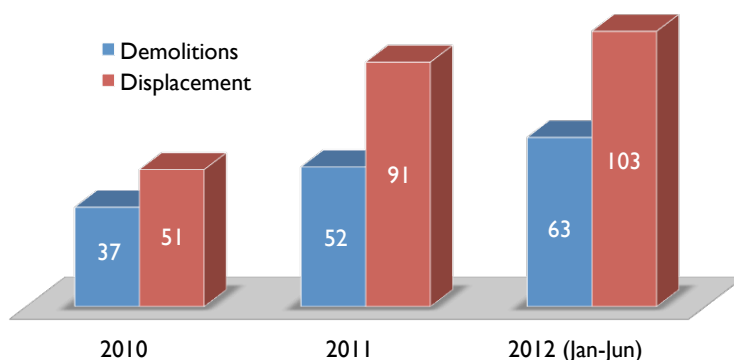
During the first six months of 2012, the monthly average of Palestinian-owned structures (63) demolished by the Israeli authorities increased by over 20 per cent, compared to the monthly average in 2011 (52), and increased by 70 per cent compared to 2010 (37). The monthly average of persons displaced in 2012 (103) also rose, by 13 per cent, compared to the previous year’s average (91), and by 102 per cent compared to 2010 (51). Most demolitions in 2012 (94 per cent) and all of the displacements occurred in Area C of the West Bank,

which is administered by Israel. The structures were demolished on the grounds that they lack Israeli-issued building permits, which are virtually impossible to obtain for Palestinian residents of the West Bank.

Among structures demolished in Area C in 2012 were 44 structures funded by international donors. In 2011, over 110 such structures were demolished by the Israeli authorities. Since the beginning of 2011, 44 per cent of the demolished assistance structures were of basic residential shelters (e.g. tents) provided to vulnerable families, while the majority of the other structures were intended to support livelihoods or improved access to basic services. OCHA has also recorded in 2012 at least 15 incidents in which supplies intended for vulnerable communities were confiscated by the Israeli authorities, including at least five incidents where donor-funded assistance was seized. Among the materials confiscated were 12 tanks providing water to water-scarce communities. All of the water tankers were confiscated after the onset of higher temperatures in May and June 2012, when the need for water in these communities, which rely heavily on tankered water, increases.

Also in June, scores of families in Area C of the northern Jordan Valley were displaced, for varying time periods, or otherwise affected during training exercises conducted by the Israeli military. In early June, 28 families from the community of Hammamat

Demolitions & Displacement, Monthly Averages



al Maleh-al Meiteh, as well as from the community of 'Ein al Hilwa - Wad al Faw area,¹ were forced to temporarily relocate, with most families staying overnight in tractor trailers with their children and some belongings. The families reported that there was a general atmosphere of fear and uncertainty, particularly amongst children. The families all returned to their original site within 48 hours, upon the completion of military training.² Two other communities in the same area, 'Ein Al Hilwa and Yarza, were ordered by the Israeli military later in the month to temporarily relocate within 48 hours in advance of a military training exercise. Only the residents of Yarza left the area and remained in nearby communities for one day, returning after the training ended. See box herein for background on the "firing zones" and their humanitarian impact on Palestinian communities.

Two other communities in the northern Jordan Valley, Al 'Aqrabaniya and 'Ein Shibli (Nablus), were seriously affected by another military training exercise carried out by Israeli forces during the month.³ Unlike the above mentioned communities, most of Al 'Aqrabaniya is located in Area B, west of the Jordan Valley, and is not designated as a "firing zone". The village council reported that the firing of sound and light bombs inside the village spread panic among residents, particularly children. In 'Ein Shibli, an Area C Bedouin community not in a "firing zone", Israeli tanks damaged infrastructure around a water spring, which serves several communities in the area as a water source for domestic and livelihood needs.

BARRIER UPDATE: AL WALAJA

The Israeli Barrier is under active construction in Al Walaja (southwest of Jerusalem), which will further undermine the village's access to its agricultural lands. The latest official Barrier route, approved in 2006, cuts off Al Walaja from the Bethlehem urban area and also encloses the village within its own 'inner barrier.' A map distributed by the Israeli Civil Administration in June, appears to amend the total enclosure plan, by replacing part of the planned barrier with a 'safety fence.' The implications of this are unclear: it is also uncertain how access will be maintained between Al Walaja and Bethlehem/Beit Jala, and from there to the remainder of the West Bank.

The original village of Al Walaja fell to Israeli forces in the first Arab-Israeli War of 1948 and was incorporated into Israel and subsequently demolished. The village's residents, now refugees, established new Al Walaja on village land which ended up on the Jordanian side of the 1949 Armistice Line (Green Line).

In 1967, Israel occupied the West Bank, and incorporated part of 'new' Al Walaja into the unilaterally expanded municipal boundaries of Jerusalem. Restrictive zoning and planning policies have resulted in multiple demolitions and demolition orders over the years. Al Walaja has lost land to the settlements of Gilo and Har Gilo: Earlier this year, the Jerusalem Municipality District Planning Committee announced plans to declare some 1,200 dunams of Al Walaja's lands a 'national park.'



Israeli authorities build tunnel for Palestinian family isolated by Barrier in Al Walaja

CASE STUDY: \$1.28 MILLION DOLLAR TUNNEL FOR ONE FAMILY

A husband and father of three boys, Omar Hajajeh lives on the easternmost edge of Al Walaja. The only way for his house, located on the “Israeli” side of the West Bank Barrier, to be connected to the rest of the village is through a tunnel especially built for him.

“Imagine if the only way for you to reach your village was through a tunnel that was built solely for your family. Imagine that your friends and family can only visit you from 6 AM until 6 PM. This is what will become of my life. The zoo in Jerusalem that I can see from my window, but not allowed to visit, houses animals in larger cages than the one being built around me.

Soon after 2008, when Israeli border patrols began dropping maps on my doorstep, along with orders to confiscate my land, I challenged this, as well as a ruling that a fence be built around my house with electronic gates allowing for my passage into and out of Al Walaja.

It was then that the tactics to push me out started. Israeli officials even offered to buy my land. ‘Think it over with your family. Take the money, and you’ll prosper.’ At one point the Israeli soldiers set up a checkpoint right outside my house to prevent me from entering because I was not a Jerusalem resident. When my friends came to visit, the Israeli soldier would detain them as well.

In 2011, months after the Israeli Supreme Court ruled against the electronic gates for accessing my land, construction workers arrived at my doorstep to drill. ‘What are you constructing?’ I asked. The worker replied, ‘A tunnel. Just for you.’ And the construction continues until today.

They detonated 1.5 tons of dynamite in the mountain to make way for this construction right next to my house. My wife was home alone and was instructed five minutes before the explosion to stay in her house. ‘I felt like the house moved up and down,’ she told me. I now need \$50,000 to repair damages they caused.

My three young children, all under the age of twelve, currently walk two kilometers to their school. The construction of the fence, barrier, and tunnel will force me to make a loop and drive my children through the tunnel and then through Al Walaja and Beit Jala in order for their school day to start – a forty-five minute trip.”

This testimony was taken by the Palestinian Centre for Human Rights

IMPROVED FLOW OF PEOPLE THROUGH RAFAH CROSSING

Despite ongoing obstacles to free movement through the Rafah crossing, which included the closure of the crossing for 5 days this month, the overall volume of Palestinians departing through Rafah increased by 11 per cent compared to the previous month. This month, roughly 18,900 travelers, primarily medical patients and students, exited Gaza via Rafah compared to 16,700 in May.. The increase in volume occurred despite the exceptional closing of the crossing for 5 days due to increased security concerns from Egyptian authorities as a result of the presidential elections that took place on 15-16 June.

The growth in passenger volume was in part the result of Egyptian attempts to facilitate the movement of travelers following the closure, yet despite this effort, a total of 1,800 Palestinians were turned back at the crossing due to claims of security issues, twice as many compared to the previous month. The increase, however, also reflects a wider trend since 2010 towards increased flows of movement through Rafah. From a monthly average of 5,600 passengers in 2009, the volume steadily increased to a monthly average of over 26,000 in the first six months of 2012. Despite the marked improvement, Palestinians crossing in 2012 still only represent 67 per cent of those crossing in the first half of 2006 (roughly 240,000), before the crossing was restricted following the Hamas capture of the Israeli soldier, Gilad Shalit.

The constrained volume of movement through the Rafah crossing (since 2007) is the result of ongoing access restrictions stemming from both Egyptian and Palestinian authorities in Gaza. Egypt has placed restrictions on those between 18 to 40 years old, who must apply for a visa before leaving and whose names are checked against a 'black list' of passengers banned from entering Egypt. For passengers outside of that age range, medical patients and students are given priority, and those wishing to travel must register 10 days in advance

with Hamas authorities at Rafah and are later informed if and when they are scheduled to cross.

The ongoing conflict between Palestinian authorities in Gaza and the West Bank and Israel's ongoing control over the Palestinian population registrar have also created obstacles to obtaining the necessary travel documents that would allow one to travel to/through Egypt via Rafah. The PA Ministry of Interior in Ramallah has been slow to issue passports to Gazan applicants, many of whom claim their applications are refused on the basis of their political affiliation with Hamas and other groups in Gaza. While Hamas authorities claim to need 10,000 passports per month, only 18,000 have been issued since August 2008. As a temporary measure, in 2011 Egypt began recognizing travel documents renewed by Hamas authorities that would allow Gazans to enter Egypt but not travel onto other countries. In addition, an estimated 20,000 to 25,000 Palestinians in Gaza are not registered as residents in Gaza and therefore are ineligible to apply for a travel document from there. Until now, Israel has resisted changing their place of residency to Gaza. Notwithstanding the ongoing Egyptian efforts to increase access through Rafah, the combined impact of these restrictions continues to limit travel to basic humanitarian cases, leaving the majority of the Gazan population locked-in without the ability to travel.

INCREASE IN FUEL FROM THE TUNNELS DOES LITTLE TO ALLEVIATE ONGOING ELECTRICITY CRISIS

This month saw the start of industrial fuel transfers donated by the Qatari government and an increase in fuel through the tunnels. However, a fuel purchases from the PA in the West Bank and the private sector in Gaza concurrently decreased, resulting in only an 11 per cent increase in the volume of fuel available for the running the Gaza Power Plant (GPP). Beginning on 7 June and continuing over the course of the month, a total of 2.6 million litres of industrial fuel donated by Qatar and destined

for the GPP were transferred from Suez seaport in Egypt to Gaza via the Nitzana and Kerem Shalom crossings.

The Qatari fuel was meant to provide a temporary measure of relief for the Gaza electricity crisis, but delays in its transfer limited the intended impact: to improve humanitarian conditions through an immediate and significant reduction in power cuts in Gaza. 30 million litres of fuel donated by Qatar arrived in Suez in late April, which Israel agreed to transfer within three months, a sufficient volume to allow the GPP to run at full capacity during that time. However, Egypt and Israel could not reach an arrangement to transfer the fuel directly via Kerem Shalom, and eventually agreed to move the fuel to Israel via the Nitzana crossing before entering Gaza at Kerem Shalom, increasing the shipping distance by over 140km. In addition, instability in the northern Sinai, characterized by several border attacks by militants and an increase in violence and crime, led Egyptian authorities to limit the daily number of trucks allowed to travel between Suez to Nitzana. The time difference between Egypt and Israel, as well as frequent delays in opening the Egyptian side of Nitzana also impacted the time available to transfer the fuel and reach Kerem Shalom within the same day.

By the end of June, only nine per cent of the 30 million litres of Qatari fuel reached Gaza. At this rate, it would take 10 months to deliver the entire 30 million litres. At the same time, the amount of fuel for the GPP purchased by the PA in the West Bank decreased by 44 per cent this month, from 4.5 million litres to 2.6 million. The PA initially agreed in April to begin purchasing fuel from Israel for the GPP, but the financial crisis within the PA and the failure of

Hamas authorities to improve tax collection from electricity users (part of the agreement concluded in April) and transfer these funds to the PA in the West Bank, led to a weakening of this arrangement. As of the end of the month, the GPP had only received roughly five million litres of fuel, 47 per cent of the required amount, allowing the plant to run at 30 MW rather than its regular 85 MW.

A further estimated 8 million litres of fuel entered via the tunnels with Egypt (6 million litres of petrol and 2 million litres of diesel), twice as much compared to the previous month. Despite the increase, the vast majority of this fuel was destined for the private market with little reaching the GPP. Furthermore, this volume is still below the average 8 to 10 million litres transferred through the tunnels until December 2011, when the fuel crisis began. The private sector also continued to import both petrol and diesel through the tunnels, but in far reduced volumes this month compared to the previous one (158,000 litres of diesel in May compared to 1.2 million litres of petrol and diesel in April).

While the current fuel supplies are providing a limited measure of relief to the fuel and electricity crisis, a long term solution is required to address the current and future electricity demands of the Gaza Strip's 1.6 million people. The GPP has been able to continue running at 30MW per day, reducing power cuts from 16 hours per day to 12 hours, but the current volume is still only 52 per cent of the demand. Gaza receives 120MV of power from Israel and 22MW from Egypt, bringing the total capacity this month to just 172 MW rather than the required 350 MW. In order to fill this gap, a sustainable and long-term solution must be found for the legitimate transfer of fuel and/or natural gas for the GPP, made increasingly important by the approaching summer, when electricity demand typically increases.

QUARTERLY HUMANITARIAN ACCESS UPDATE

This is the first regular quarterly OCHA report highlighting access trends affecting the international humanitarian organizations in the oPt. This report covers the second quarter of 2012, from April through June.

STAFF ACCESS INCIDENTS

UN staff access in the Jerusalem area is becoming increasingly difficult. There were twice as many reported access incidents in the Jerusalem area this quarter compared to the previous one (from 42 to 84 incidents), primarily the result of requests to search UN vehicles.⁴ These incidents accounted for more than half of all incidents this quarter and resulted in the loss of 398 staff hours, or 50 working days. According to the Convention on UN Privileges and Immunities, to which Israel is a signatory, the property and assets of the United Nations are immune from search.⁵

By contrast, incidents at the Erez crossing with Gaza decreased by 69 per cent compared to last quarter, from 43 to 18 incidents, typically the result of demands for strip searches at the pedestrian terminal. Allenby also remained relatively problematic, with 10 incidents this quarter compared to 13 the previous quarter.

GAZA PERMITS FOR INGO INTERNATIONAL STAFF

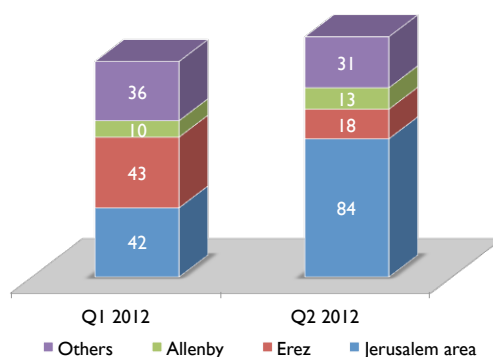
The waiting time for a permit to Gaza for INGO international staff decreased by 70 per cent compared to the previous quarter. On average, it took 11 days to receive a permit to Gaza compared to 32 days the first three months of 2012. This reflects a significant improvement over late 2011, when the average processing time was almost 2 months. The approval rate also remained high. Out of 148 permits submitted, 89 per cent were approved by the requested time, 7 per cent were approved but only after the requested travel date, while 3 per cent were cancelled by the staff.

Despite the improvement in international staff permits to Gaza, several INGOs have had their

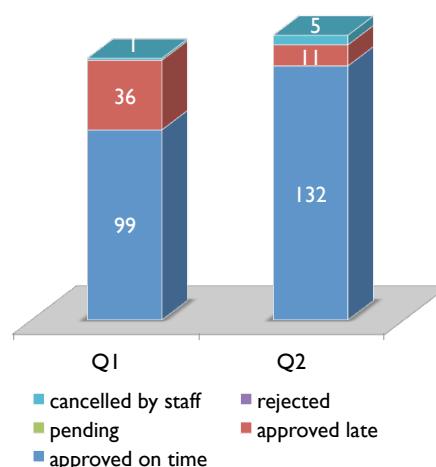
KEY UPDATES:

- Rising demands for searches of UN vehicles at checkpoints between Bethlehem and Jerusalem are hindering humanitarian access.
- The average processing time for Gaza permits for INGO international staff dropped from 32 to 11 days compared to the previous quarter.
- Erez CLA approves 60 3-month permits for UN Gaza staff. The overall approval rate remains above 80 per cent.
- A project to rehabilitate the Beit Hanoun water network was approved by Israeli authorities on 28 June 2012, however, 6 project components were rejected, covering a range of shelter, WASH and Education projects.

Access Incidents



INGO Int'l Staff Permits



permit requests for West Bank staff access to east Jerusalem or Israel either denied or left pending for several months. On several occasions, INGOs were informed such problems were the result of a quota of 1,700 permits for international organizations. Some organizations also faced delays in receiving B-1 work visas for certain categories of humanitarian workers, but the visas were eventually issued.

UN PERMITS TO/FROM GAZA

This quarter, Israeli authorities issued 60 three-month permits to exit Gaza for UN national staff. This is the first time the UN has received so many long-term permits at one time, improving access for UN Gaza Staff and reducing the time and cost for UN agencies to obtain permits. In the past, staff faced difficulties obtaining long-term permits rather than time-bound permits for specific events/activities, typically valid for several days to a week. An additional request for three-month permits to Gaza for 80 UN staff from the West Bank, including East Jerusalem, is currently under review with Israeli authorities.

The approval of these permits is consistent with a general improvement in the approval rate for UN Gaza permits during the first half of 2012. Similar to the first quarter of 2012, this quarter, out of a total 225 permit requests submitted by UN agencies, 84 per cent were approved, 6 per cent were denied and 10 per cent were left pending.

INTERNATIONAL RECONSTRUCTION PROJECTS IN GAZA

Despite some progress, the approval process for international reconstruction projects continues to present considerable challenges for agencies to respond to urgent needs, prolonging the hardship of the affected population. On 28 June, Israel approved a USD 3 million project to reconstruct the Beit Hanoun water network, badly damaged during Operation Cast Lead. This project took 26 months to be approved, while on average projects take 8 months to receive approval. However, six project components, valued at USD 5 million were rejected this quarter, covering different shelter, WASH and education projects.



UNRWA housing project in Rafah Camp

A further 19 per cent of the UN programme of work submitted to Israeli authorities has been pending approval for an average 19 months. Pending projects include a range of housing and infrastructure efforts needed to address damages from on-going hostilities and the impact of 5 years of blockade. 16 non-UN WASH projects, valued at USD 71 million, have yet to be completed due to pending requests for restricted materials entry, some of which have been waiting for over a year.

The approval and coordination process also create an additional financial burden for agencies. In 2011,

the UN spend at least USD 2.3 million in managing the approval and coordination process for bringing construction materials to Gaza, which could have otherwise been invested in housing for over 50 families or schools for roughly 2,000 students. At the same time, more than twice as much construction materials enter Gaza through the tunnels than the Kerem Shalom crossing, yet due to their illegitimate origin, UN agencies cannot benefit from tunnel materials and therefore have been the most heavily affected by the Israeli restrictions.⁶

UN Reconstruction Programme for Gaza - Status of Project Submitted for Approval with COGAT Jul - Aug

UN Reconstruction Programme: 139 Projects, USD 861 million

Status	Value	Project type	Months to receive/pending approval	Funding Status (committed or pledged)
Approved	USD 362 million	2,587 housing units	8 months	98 percent
		54 schools		
		4 health facilities		
		19 WASH		
Pending	USD 91 million	525 housing units	19 months	75 percent
		23 schools		
		8 WASH		
		11 infrastructure		
Rejected	USD 40 million	324 housing units	N/A	100 percent
		1 school		
		1 WASH		

*** Analysis of additional humanitarian access issues affecting international organizations in the oPt will be included in future reports as further data becomes available.***

END NOTES

1. Note that Ein Al Hilwa has three sub-communities/locations: Ein Al Hilwa – Um al Jmal, Ein Al Hilwa –
2. For details of the incident, see OCHA oPt Weekly Protection of Civilians Report, for the period 30 May – 5 June 2012, available at: http://www.ochaopt.org/documents/ocha_opt_protection_of_civilians_weekly_report_2012_06_08_english.pdf.
3. In the course of the exercise, which lasted for two days, a number of military armored vehicles moved through the built-up area of the village and damaged the asphalt roads, as well as five electricity poles and two trees.
4. Information on access incidents included in an online OCHA database, updated on a monthly basis based on reports submitted by UN agency and international organization staff to OCHA and UNDSS.
5. Convention on the privileges and Immunities of the United Nations, Adopted by the General Assembly of the United Nations on 13 February 1946.
6. Each month, 200,000 tons of aggregates, cement and steel bars enter via the tunnels compared to a monthly average of 70,000 tons via Kerem Shalom in 2012.

CONTRIBUTING AGENCIES

United Nations Children's Fund (UNICEF), United Nations Development Programme (UNDP), United Nations Development Fund for Women (UNIFEM), United Nations Educational Scientific and Cultural Organization (UNESCO), United Nations Food and Agricultural Organization (FAO), United Nations Office for the Coordination of Humanitarian Affairs (OCHA), United Nations Office for the High Commissioner of Human Rights (OHCHR), United Nations

Population Fund (UNFPA), United Nations Relief and Works Agency for Palestine Refugees in the Near East (UNRWA), United Nations Special Coordinator for the Middle East Peace Process (UNSCO), World Food Programme (WFP), World Health Organization (WHO), Al Haq, Badil, Save the Children (UK), Defence for Children International – Palestine Section (DCI-PS), Oxfam GB, Palestine Hydrology Group (PHG), Campaign for the Right to Enter, Action Against Hunger (ACF),

MORE INFORMATION: Omar Abulhaj, abulhaj@un.org, +972 (0)2 5829962

Annex: Monthly Indicator Tables

Conflict-related casualties and violence¹

Direct Israeli-Palestinian conflict related casualties	2010	2011	2011						2012					
	Total	Total	Jul	Aug	Sep	Oct	Nov	Dec	Jan	Feb	Mar	Apr	May	June
Palestinian deaths														
Gaza	72	108	3	29	3	12	3	7	3	1	25	0	0	17
West Bank	15	13	1	2	1	0	0	1	0	1	1	1	0	0
Total	87	121	4	31	4	12	3	8	3	2	26	1	0	17
Of whom are civilians ²	35	59	2	19	2	0	2	3	1	2	6	1	0	6
Of whom are female	1	3	0	0	0	0	0	0	0	0	1	0	0	0
Palestinian injuries														
Gaza	286	467	18	99	6	14	9	38	2	23	116	5	19	83
West Bank	1261	1643	138	92	143	96	54	172	58	234	288	164	684	148
Total	1547	2110	156	191	149	110	63	210	60	256	404	169	703	231
Of whom are civilians	1510	2059	152	185	149	100	60	198	59	267	391	167	703	209
Of whom are female	126	148	16	12	5	14	5	13	0	15	12	4	15	7
Israeli deaths														
Israel, Gaza and West Bank	9	12	0	1	2	1	0	0	0	0	0	0	0	1
Of whom are civilians	4	12	0	1	2	1	0	0	0	0	0	0	0	0
Of whom are female	2	0	0	0	0	0	0	0	0	0	0	0	0	0
Israeli injuries														
Israel, Gaza and West Bank	195	124	3	22	5	9	3	6	3	14	16	9	15	4
Of whom are civilians	45	58	2	16	3	8	3	0	2	3	13	9	4	1
Of whom are female	15	3	0	2	1	0	0	0	0	0	3	1	0	0
Tunnel-related casualties³														
	2010	2011	2011						2012					
	Total	Total	Jul	Aug	Sep	Oct	Nov	Dec	Jan	Feb	Mar	Apr	May	June
Deaths	46	36	3	4	7	3	3	0	2	0	1	1	3	0
Injuries	89	54	5	7	11	0	0	4	2	1	4	3	4	0
Israeli-settler related incidents resulting in casualties or property damage														
	2010	2011	2011						2012					
	Total	Total	Jul	Aug	Sep	Oct	Nov	Dec	Jan	Feb	Mar	Apr	May	June
Incidents leading to Palestinian casualties ⁴	79	120	8	3	16	19	4	7	7	9	6	12	10	3
Incidents leading to Palestinian property/land damages	219	291	10	19	48	31	12	18	12	15	22	12	28	20
Incidents leading to Israeli Casualties	32	23	1	1	4	2	4	0	1	2	2	6	1	1
Incidents leading to Israeli Property/land damages ⁵	83	13	1	1	0	1	0	1	2	3	2	0	1	1
Civilian Palestinians killed or injured by unexploded ordnance in Gaza														
	2010	2011	2011						2012					
	Total	Total	Jul	Aug	Sep	Oct	Nov	Dec	Jan	Feb	Mar	Apr	May	June
Palestinians killed	Adults	0	0	0	0	1	0	0	0	0	0	0	0	0
	Children	2	0	0	1	0	0	0	0	0	0	3	0	0
Palestinians injured	Adults	6	4	0	0	0	1	0	3	0	1	8	4	0
	Children	8	5	0	0	1	2	0	3	3	0	10	3	0

Source: United Nations Mine Action Service (UNMAS)

Search and Arrest

	2010	2011	2011						2012					
	Monthly Average	Monthly Average	Jul	Aug	Sep	Oct	Nov	Dec	Jan	Feb	Mar	Apr	May	June
Search Campaigns (West Bank)	397	349	464	243	221	315	307	369	349	417	334	399	286	439
Palestinians detained (West Bank)	275	262	269	228	174	179	210	290	272	309	244	338	231	173

Source: OCHA


Palestinians under Israeli custody (occupation related)⁶

	2010	2011	2011						2012					
	Total	Total	Jul	Aug	Sep	Oct	Nov	Dec	Jan	Feb	Mar	Apr	May	June
Total as of the end of the month	6219	5326	5398	5204	na	na	4803	na	4803	na	4386	4424	4437	4484
of whom are women	31	26	29	29	na	na	6	na	3	na	5	5	4	4
of whom are administrative detainees ⁷	218	240	243	272	na	na	283	na	309	na	320	320	302	285
of whom are detained until the conclusion of legal proceedings	940	633	621	642	na	na	630	na	676	na	795	853	896	909

Source: Israeli Prison Service (through B'Tselem)

Demolition of Structures


Structures demolished⁸



	2010	2011	2011						2012					
	Total	Total	Jul	Aug	Sep	Oct	Nov	Dec	Jan	Feb	Mar	Apr	May	June
Total West Bank	439	622*	28	2	12	64	44	98	44	76	56	84	32	68
of which in Area C	357	560	25	0	10	63	41	87	39	50	56	84	28	63
of which in East Jerusalem	82	42	3	2	2	1	3	11	5	26	0	0	4	5

*20 are in Area B

People Displaced due to demolitions or evictions⁹



	2010	2011	2011						2012					
	Total	Total	Jul	Aug	Sep	Oct	Nov	Dec	Jan	Feb	Mar	Apr	May	June
Total West Bank	606	1094	66	0	49	83	103	100	66	163	126	116	36	86
of whom were displaced in Area C	478	1006	42	0	39	83	103	83	60	161	126	116	34	86
of whom were displaced in East Jerusalem	128	88	24	0	10	0	0	17	6	2	0	0	2	0

Source: Displacement Working Group

Child Protection

Number of Palestinian children killed - direct conflict

	2010	2011	2011						2012					
	Total	Total	Jul	Aug	Sep	Oct	Nov	Dec	Jan	Feb	Mar	Apr	May	June
West Bank	4	2	0	0	0	0	0	0	0	0	1	0	0	0
Gaza Strip	5	11	0	3	0	0	0	1	1	0	1	0	0	4

Number of Palestinian children injured - direct conflict

West Bank	282	308	17	17	13	14	7	21	4	16	12	27	52	1
Gaza Strip	50	125	6	24	3	1	0	8	0	5	39	0	0	20

Number of Israeli children killed - direct conflict

oPt	0	1	0	0	1	0	0	0	0	0	0	1	0	0
Israel	0	1	0	0	0	0	0	0	0	0	0	0	0	0

Number of Israeli children injured - direct conflict

oPt	2	0	0	0	0	0	0	0	0	0	0	1	0	0
Israel	0	0	0	0	0	0	0	0	0	0	0	0	0	0

Number of Palestinian children held in detention by Israeli authorities

221

In Israel and oPt	289 (mon ave)	1,781	202	180	164	150	161	135	170	187	206	220	234	221
-------------------	---------------------	-------	-----	-----	-----	-----	-----	-----	-----	-----	-----	-----	-----	-----

Number of Palestinian children displaced by demolitions

West Bank	297	618	42	0	32	52	50	68	36	89	42	55	19	40
-----------	-----	-----	----	---	----	----	----	----	----	----	----	----	----	----

Number of incidents resulting in the disruption of schools¹⁹

oPt	24	47	1	6	3	6	3	3	1	3	6	1	11	na
-----	----	----	---	---	---	---	---	---	---	---	---	---	----	----

Source: OCHA, DWG, Defence for Children International, Israel Palestine Working Group on grave violations affecting children in armed conflict

Internal West Bank movement obstacles

	2010	2011					2012					
	2010 Monthly Average	Aug	Sep	Oct	Nov	Dec	Jan	Feb	Mar	Apr	May	June
Permanently staffed checkpoints (not including Barrier Checkpoints)	71	62	62	62	62	62	62	59	59	59	59	61
Barrier checkpoint	na	34	34	34	34	34	34	34	34	34	34	34
Partially staffed checkpoints ¹²	21	25	25	25	25	25	25	26	26	26	26	25
Unstaffed obstacles ¹³	519	436	436	436	436	436	436	455	455	455	455	436
Total excluding Barrier checkpoints	611	523	523	523	523	523	523	540	540	540	540	522
Flying Checkpoints ¹⁴	414	488	406	540	na	na	401	385	340	na	256	343

Source: OCHA

Access to healthcare - Gaza

	2010	2011					2012					
	2010 Monthly Average	Aug	Sep	Oct	Nov	Dec	Jan	Feb	Mar	Apr	May	June
Applications for permits to leave Gaza through Erez Crossing ¹⁵	970	668	822	864	711	760	902	766	768	764	883	784
of which approved	757	601	746	790	62	722	847	701	725	724	849	733
of which denied	54	14	20	18	12	4	6	10	9	8	5	3
of which delayed ¹⁶	158	53	56	56	37	34	49	55	34	32	29	48

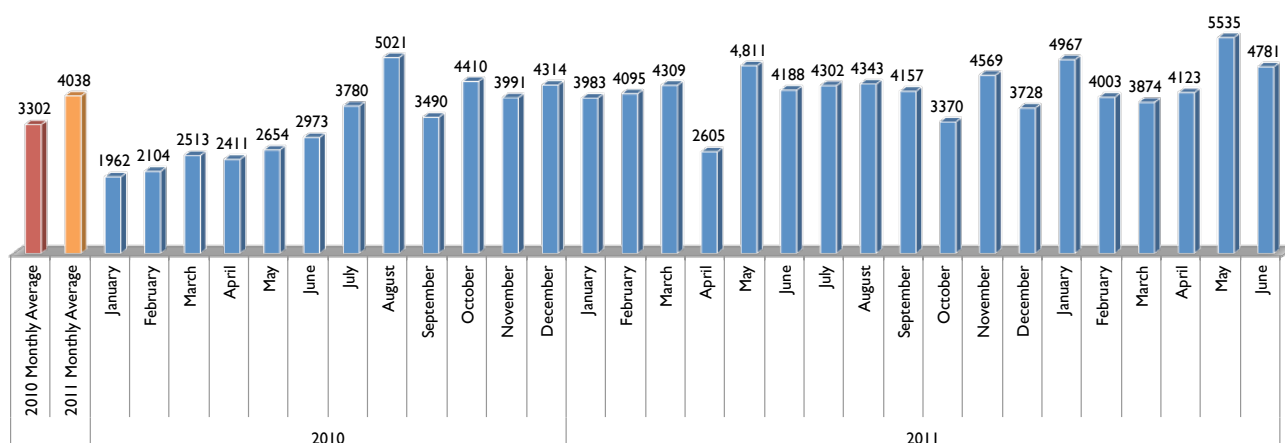
Source: WHO

Movement of humanitarian staff, West Bank

	2010	2011					2012					
	2010 Monthly Average	Aug	Sep	Oct	Nov	Dec	Jan	Feb	Mar	Apr	May	June
Incidents of delayed or denied access at WB checkpoint ¹⁷	44	26	44	29	na	32	34	27	28	28	34	51
Of which occurred at Jerusalem checkpoint	32	10	7	18	na	7	7	7	11	10	19	42
Number of staff days lost due to checkpoint incidents	29	40	14	13	na	11	10	16	11	6.5	14	50

Source: OCHA

Truckloads of goods entering Gaza from Israel



Source: Palestinian Ministry of National Economy, Gaza

Consolidated Appeals Process (CAP): CAP 2011 and 2012 funding status as of 17 July 2012

Cluster	CAP 2011		CAP 2012	
	Total request in million \$	% of funds received	Total request in million \$	% of funds received
Agriculture	36	39%	24,921,339	35%
Cash for Work and Cash Assistance	144	40%	95,559,928	35%
Coordination and Support Services	21	103%	21,167,518	32%
Education	16	30%	16,503,471	33%
Food Security	204	64%	170,513,876	62%
Health and Nutrition	21	77%	19,179,604	45%
Protection	40	71%	45,813,429	50%
Shelter and Non-food items	22	41%	na	na
Water, Sanitation and Hygiene	34	39%	21,759,464	14%
Total	537	55%	416,701,603	63%*

Source: Financial Tracking System (FTS)

*An additional US \$ 69,216,662 are available but still not specified to which cluster

Monthly Indicator Notes and Clarifications

Casualties

1. **Conflict-related casualties:** includes all casualties that occurred in violent incidents immediately related to the Israeli occupation and the Israeli-Palestinian conflict, such as military operations, search and arrest campaigns, clashes during demonstrations, attacks involving Israeli settlers, etc. These figures exclude other related casualties such as those in the context of access delays, the explosion of unexploded ordnance, reckless handling of weapons, collapse of tunnels, and internal Palestinian violence.
2. **Civilians:** includes people who, according to the information available at the time of publication, did not fulfill a “continuous combatant function” as part of an organized armed group, regardless of the circumstances of their injury or killing. Figures in this category should not be considered comprehensive, as unconfirmed or disputed cases are excluded.
3. **Tunnel related casualties:** figures in this category may overlap with those under conflict-related casualties, as it includes casualties in the context of Israeli attacks targeting tunnels, as well as those resulting from tunnel collapses and other accidents.

Israeli settler-related violence

4. **Incidents resulting in casualties:** includes all violent incidents involving Israeli settlers and Palestinians, including those in which the injury was caused by a member of the Israeli security forces during an intervention in such an incident.
5. **Incidents resulting in property damage/losses:** *ibid.*

Search and Arrest

6. **Palestinians in Israeli custody:** includes all Palestinians from the oPt held by the Israeli authorities at the end of each month, whether in Israel or in the West Bank, in connection to an offense related to the Israeli occupation and classified by the Israeli authorities as a “security detainee/prisoner”. Therefore it excludes Palestinians held in connection to a “regular” criminal offense.
7. **Administrative detainees:** Palestinians held by the Israeli authorities without charge or trial, allegedly for preventive purposes.

Demolitions

8. **Structures demolished:** includes all Palestinian-owned structures in the oPt demolished by the Israeli authorities, regardless of their specific use (residential or non-residential) or the grounds on which the demolition was carried out (lack of building permit, military operation or punishment).
9. **People displaced due to demolitions:** includes all persons that were living in structures demolished by the Israeli authorities, regardless of the place in which they relocated following the demolition.
10. **People affected by demolitions:** includes all people that benefited from a demolished structure (as a source of income, to receive a service, etc), excluding those displaced.

Access West Bank

11. **Permanently staffed checkpoints:** staffed by Israeli security personnel, excluding checkpoints located on the Green Line and ‘agricultural gates’ along the Barrier.
12. **Partially staffed checkpoints:** checkpoint infrastructure staffed on an ad-hoc basis.
13. **Unstaffed obstacles:** includes roadblocks, earthmounds, earth walls, road gates, road barriers, and trenches. For historical reasons, this figure excludes obstacles located within the Israeli-controlled area of Hebron City (H2).
14. **‘Flying’ or random checkpoints:** checkpoints deployed on an ad hoc basis in places without pre-existing infrastructure.

Access to health

15. **Applications for permits to leave Gaza through Erez:** includes only the applications submitted for travel scheduled within the reporting period.
16. **Delayed applications:** includes applications regarding which no answer was received by the date of the medical appointment, thus forcing the patient to restart the application process.

Movement of humanitarian staff

17. **Incidents of delayed or denied access at a WB checkpoint:** includes incidents affecting local or international staff of humanitarian organizations, both UN and international NGOs.

Imports to Gaza

18. **Truckloads by type:** for historical reasons this figure excludes truckloads carrying all types of fuel.

Child Protection

19. Attacks include the targeting of schools that cause the total or partial destruction of such facilities. Other interferences to the normal operation of the facility may also be reported, such as the occupation, shelling, targeting for propaganda of, or otherwise causing harm to school facilities or its personnel.